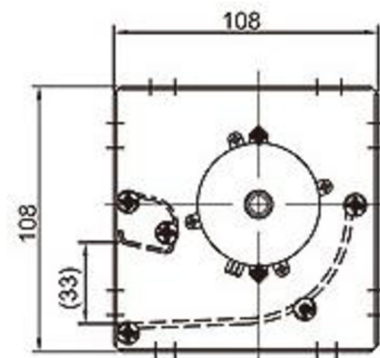
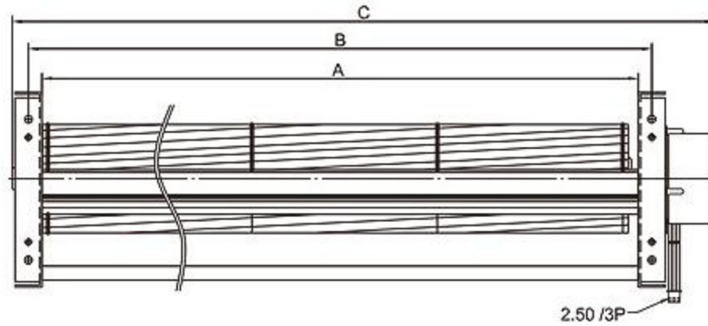




# CD060FT- Series

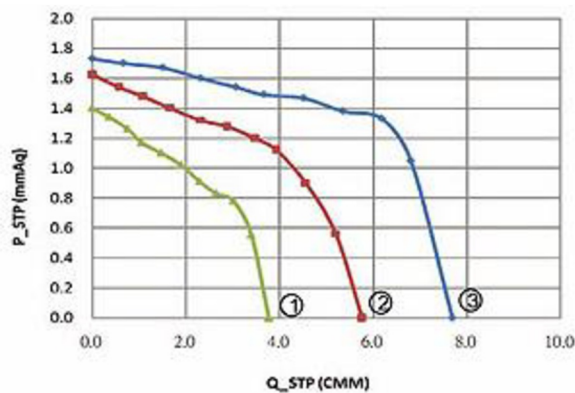


Size	Ø60mm
Housing	Aluminum
Impeller	Aluminum
Motor	DC Brushless 3 Phase Motor
Operating Temp.	0°C~+45°C
Insulation	Class A

Model Number	Size (mm)			Voltage (V)	VC (V)	Current (A)	Power (W)	Speed (RPM)	Air Flow (CFM)	Pressure (mmH2O)	Noise dB(A)	Weight (Kg)
	A	B	C									
CD06030V24BHVFT	306	321	372	24	DC 0~10V	0.25	6.0	1500	137 ○,1	1.4	36	1.0
CD06042V24BHVFT	426	441	492	24	DC 0~10V	0.40	9.6	1500	201 ○,2	1.6	40	1.2
CD06060V24BHVFT	606	621	671	24	DC 0~10V	0.73	17.5	1500	272 ○,3	1.7	42	1.5

\_ for B / S = Ball Bearing / Sleeve Bearing

Air Performance



Wiring Diagram

