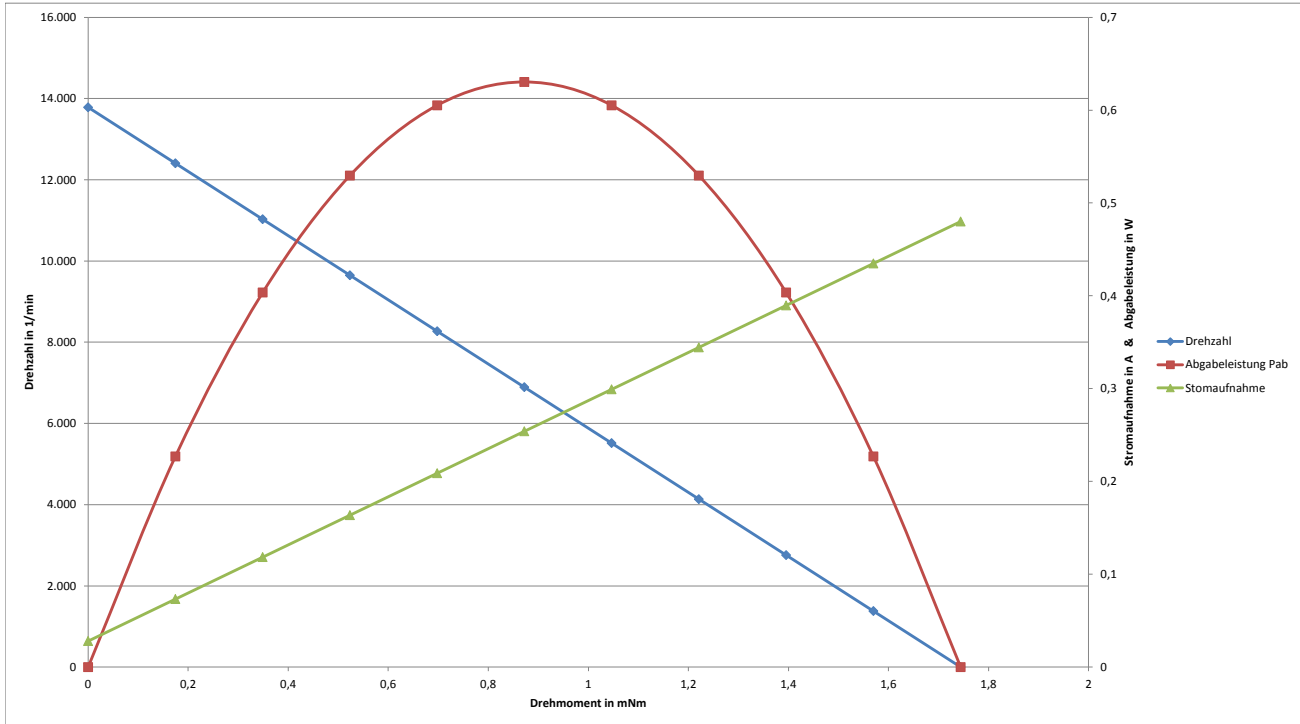
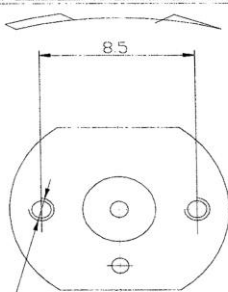


| MODEL | VOLTAGE | | NO LOAD | | AT MAXIMUM EFFICIENCY | | | | STARTING | | max. OUTPUT POWER W | POLES | CAPACITOR | BRUSHES |
|----------------|-----------------|---------|---------|---------|-----------------------|---------|--------|--------------|----------|--------|------------------------|-------|-----------|---------|
| | Operating Range | Nominal | Speed | Current | Speed | Current | Torque | Output Power | Current | Torque | | | | |
| | VDC | VDC | rpm | A | rpm | A | mNm | W | A | mNm | | | | |
| FF-N20VA-08260 | 1,5-6,0 | 5,0 | 13.784 | 0,03 | 11.072 | 0,12 | 0,34 | 0,40 | 0,48 | 1,74 | 0,63 | 3 | none | carbon |

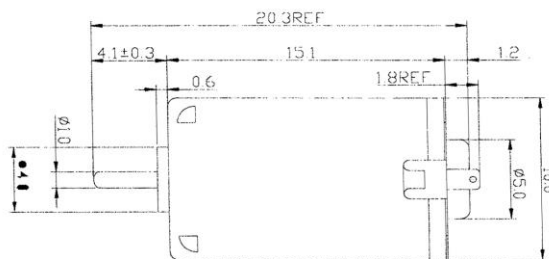


DIRECTION OF ROTATION



ISO M1. 4X0.3 TAPPED HOLE
2 PLACES

Usable machine screw length 1.2 max.
form motor mounting surface.



SHAFT LENGTH 19.6

UNIT: MILLIMETERS

