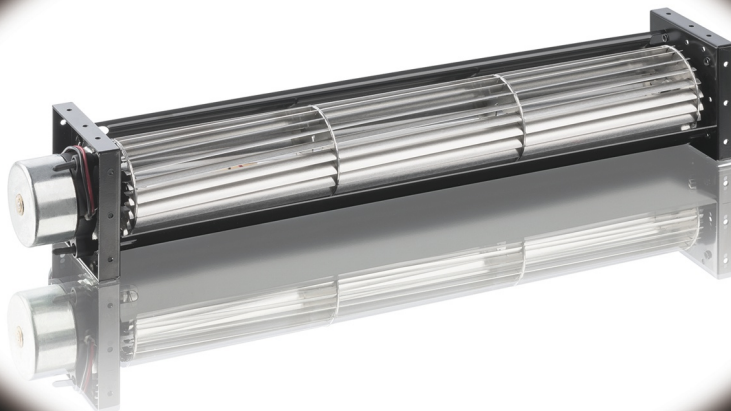
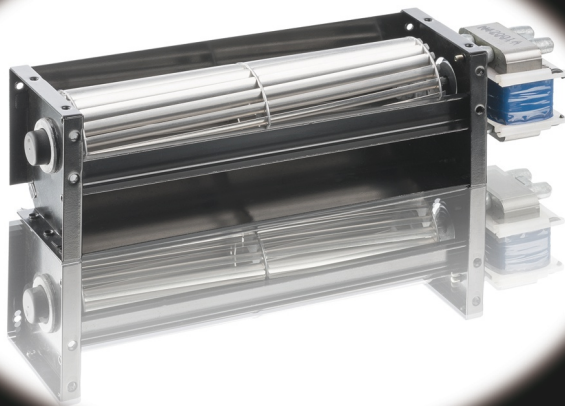


**We
Remove
The
Heat**

MOTRAXX
ELEKTROGERAETE GMBH



UNSER UNTERNEHMEN

Die Firma MOTRAXX ELEKTROGERÄTE GmbH ist ein international tätiger OEM/ODM-Hersteller in den Produktsegmenten Elektromotoren, Netzteile sowie Gerätelüfter.

Seit Ausgliederung aus der IGARASHI MOTOREN GMBH im Jahre 2000 werden diese Geschäftsbereiche erfolgreich eigenständig fortgeführt.

Unsere Firma hat sich schwerpunktmäßig auf kundenspezifische Problemlösungen spezialisiert. Die MOTRAXX ELEKTROGERÄTE GmbH versteht sich als verlässlicher Partner ihrer Kunden - von der Idee, während der Entwicklungsphase, bis hin zur Serienreife.

Gerne begleiten wir Sie durch alle Projektphasen. Der enge Kontakt zu unseren Kunden ermöglicht eine rasche Umsetzung von Ideen und Mustermodifizierungen. Dank unseres gut ausgestatteten, hauseigenem Labor können Messungen und Auswertungen schnell und unkompliziert erfolgen.

Selbstverständlich bieten wir auch ein standardisiertes Lieferprogramm von ausgewählten Artikeln an, welches ab Lager Burgthann eine Auslieferung innerhalb von 2 Werktagen ermöglicht.

Dieses Standardprogramm ist für den Einsatz im Kleinserienbereich konzipiert, so dass wir hiermit auch unsere Kunden mit geringerem Bedarf bedienen können.

RICHTLINIEN

Alle unsere Lüfter erfüllen die Anforderungen nach den Richtlinien:

1907/2006/EU REACH

2011/65/EU RoHS

Außerdem ist standardmäßig eine CE Kennzeichnung nach folgenden Normen verfügbar:

EN55014-1:2018-08 Elektromagnetische Verträglichkeit - Anforderung an Haushaltgeräte, Elektrowerkzeuge und ähnlichen Elektrogeräte -Teil 1: Störaussendung

EN55014-2:2016-01 Elektromagnetische Verträglichkeit - Anforderungen an Haushaltgeräte, Elektrowerkzeuge und ähnliche Elektrogeräte - Teil 2: Störfestigkeit

EN61000-3-2:2015-03 Elektromagnetische Verträglichkeit (EMV) - Teil 3-2: Grenzwerte - Grenzwerte für Oberschwingungsströme (Geräte-Eingangsstrom ≤ 16 A je Leiter)

EN61000-3-3:2014-3 Elektromagnetische Verträglichkeit (EMV) - Teil 3-3: Grenzwerte - Begrenzung von Spannungsänderungen, Spannungsschwankungen und Flicker in öffentlichen Niederspannungs-Versorgungsnetzen für Geräte mit einem Bemessungsstrom ≤ 16 A je Leiter, die keiner Sonderanschlussbedingung unterliegen

EN60335-1:2012 Sicherheit elektrischer Geräte für den Hausgebrauch und ähnliche Zwecke - Teil 1: Allgemeine Anforderungen

Auch Zertifizierungen nach "Nicht-EU-Richtlinien" stellen kein Problem dar. So z.B.

UL 507 Standard für elektrische Lüfter

Die passende Norm oder Anforderung nicht dabei? Scheuen Sie nicht uns danach zu Fragen. Eine Vielzahl von weiteren Zertifizierungen sind möglich.

OUR COMPANY

The company MOTRAXX ELEKTROGERAETE GmbH is an international OEM/ODM-Manufacturer in the product segments of electric motors, power supplies and cooling fans.

Since outsourcing from the IGARASHI MOTOREN GMBH in year 2000, these business segments are operated successfully independently.

Our company has specialized focus on customized solutions and defines itself as a reliable partner of its customer - from the idea, through the development up to maturity phase.

We would like to accompany you through all project stages. The close contact to our customer makes a fast realization of ideas and sample modifications possible.

Because of our in-house, well equipped laboratory, measurements and evaluations can be done fast and easy.

Of course, we also offer a standardized product range of selected parts which are on stock at our warehouse in Burgthann. This enables deliveries within 2 business days.

This standard range is designed for use in small series, so herewith we are able to serve our customers with small quantity requirement.

DIRECTIVES

All our fans fulfill the following directives:

1907/2006/EU REACH

2011/65/EU RoHS

Also CE-Conformity regarding following regulations is given as standard.

EN55014-1:2018-08 Electromagnetic compatibility - Requirements for household appliances, electric tools and similar apparatus - Part 1: Emission

EN55014-2:2016-01 Electromagnetic compatibility - Requirements for household appliances, electric tools and similar apparatus - Part 2: Immunity

EN61000-3-2:2015-03 Electromagnetic compatibility (EMC) - Part 3-2 Limits for harmonic current emissions (equipment input current ≤ 16 A per phase)

EN61000-3-3:2014-3 Electromagnetic compatibility (EMC) - Part 3-3: Limits - Limitation of voltage changes, voltage fluctuations and flicker in public low-voltage supply systems, for equipment with rated current ≤ 16 A per phase and not subject to conditional connection

EN60335-1:2012 Household and similar electrical appliances - Safety - Part 1: General requirements

Also certifications according to "non-EU-directives" are possible e.g.

UL 507 Standard for Electric Fan

Needed regulations or requirements not listed? Do not hesitate to ask. Further certifications are available.

INHALT / CONTENT

Querstromlüfter - AC

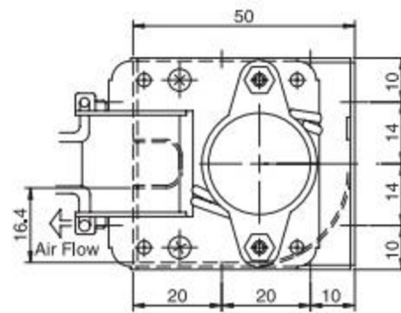
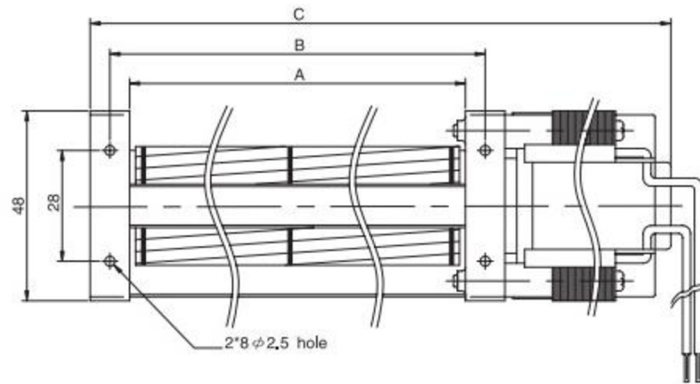
Seite 5	CA130E
Seite 6	CA040E
Seite 7	CA040M
Seite 8	CA043E
Seite 9	CA050E
Seite 10	CA060C
Seite 11	CA060F
Seite 12	CA060M
Seite 13	CA060V
Seite 14	CA081H
Seite 15	CA090F
Seite 16	CA110F
Seite 17	CA150E
Seite 18	CA0453030Q
Seite 19	CA603030Q

Querstromlüfter - DC

Seite 20	CD025E
Seite 21	CD025V
Seite 22	CD030E / CD0303F
Seite 23	CD040E / CD0403E / CD0403F
Seite 24	CD043E
Seite 25	CD043Q
Seite 26	CD050E
Seite 27	CD060E
Seite 28	CD060FT
Seite 29	CD060HT
Seite 30	CD060Q
Seite 31	CD065Q
Seite 32	CD0813F
Seite 33	CD0813H
Seite 34	CD06030E



CA030E- Series

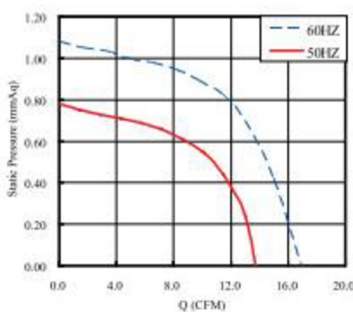


Size	Ø30mm
Housing	Aluminum
Impeller	Aluminum
Motor	AC Shaded Pole Type
Operating Temp.	0°C ~ +45°C
Insulation	Class A

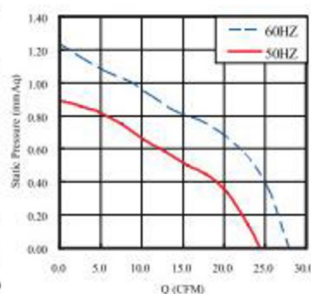
Model Number	Size (mm)			Voltage (V)	Frequency (Hz)	Current (A)	Power (W)	Speed (RPM)	Air Flow (CFM)	Pressure (mmH2O)	Noise (dB(A))	Weight (g)
	A	B	C									
CA03009V11_HWE	98	108	154	120	50/60	0.11/0.09	8/7	2500/2900	14/17	0.8/1.1	21/24	390
CA03009V22_HWE				230	50/60	0.07/0.05	8/7	2500/2900	14/17	0.8/1.1	21/24	
CA03015V11_HWE	160	170	222	120	50/60	0.14/0.12	9/8	2700/3100	24/28	0.9/1.2	27/30	520
CA03015V22_HWE				230	50/60	0.09/0.07	10/9	2700/3100	24/28	0.9/1.2	27/30	
CA03019V11_HWE	198	208	260	120	50/60	0.14/0.12	9/8	2700/3100	32/35	1.0/1.3	27/30	540
CA03019V22_HWE				230	50/60	0.09/0.07	11/9	2700/3100	32/35	1.0/1.3	27/30	
CA03029V11_HWE	300	310	366	120	50/60	0.20/0.17	15/13	2700/3100	53/60	1.4/1.7	32/34	670
CA03029V22_HWE				230	50/60	0.09/0.07	12/11	2700/3100	53/60	1.4/1.7	32/34	

_ for B / S = Ball Bearing / Sleeve Bearing

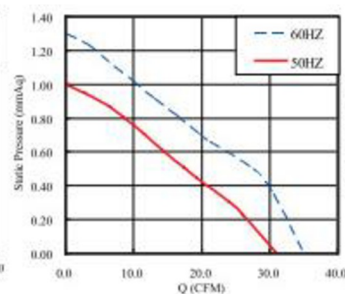
CA03009E



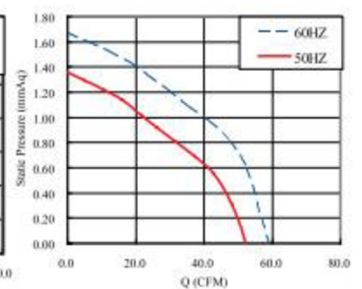
CA03015E



CA03019E

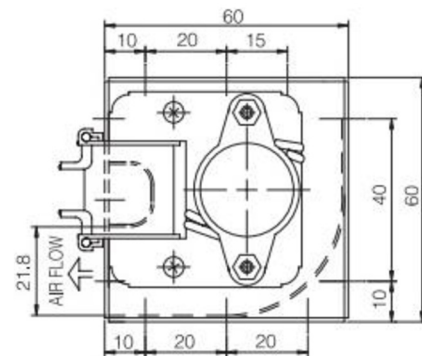
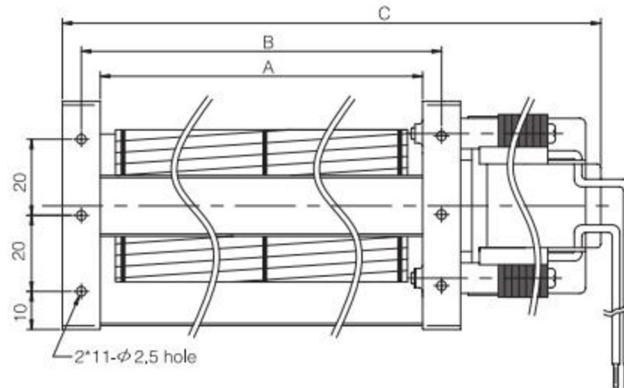


CA03029E





CA040E- Series

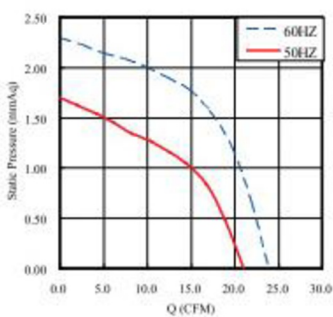


Size	Ø40mm
Housing	Aluminum
Impeller	Aluminum
Motor	AC Shaded Pole Type
Operating Temp.	0°C~+45°C
Insulation	Class A

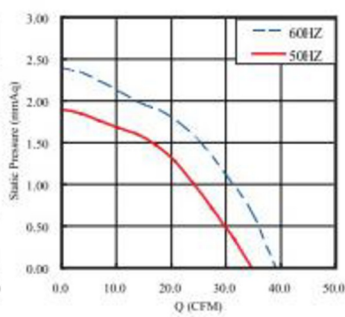
Model Number	Size (mm)			Voltage (V)	Frequency (Hz)	Current (A)	Power (W)	Speed (RPM)	Air Flow (CFM)	Pressure (mmH2O)	Noise (dB(A))	Weight (g)
	A	B	C									
CA04009V11_HWE	98	108	154	120	50/60	0.14/0.12	10/9	2700/3000	21/24	1.7/2.3	29/33	520
CA04009V22_HWE				230	50/60	0.09/0.07	11/9	2700/3000	21/24	1.7/2.3	29/33	
CA04015V11_HWE	160	170	222	120	50/60	0.15/0.13	11/10	2600/2800	35/39	1.9/2.4	30/34	560
CA04015V22_HWE				230	50/60	0.09/0.07	11/9	2600/2800	35/39	1.9/2.4	30/34	
CA04019V11_HWE	198	208	260	120	50/60	0.15/0.13	10/9	2500/2400	49/46	2.0/2.6	33/31	600
CA04019V22_HWE				230	50/60	0.09/0.07	12/11	2500/2400	49/46	2.0/2.6	33/31	
CA04029V11_HWE	300	310	366	120	50/60	0.23/0.21	17/16	2400/2200	74/70	2.1/2.6	37/35	730
CA04029V22_HWE				230	50/60	0.10/0.09	13/13	2400/2200	74/70	2.1/2.6	37/35	

_ for B / S = Ball Bearing / Sleeve Bearing

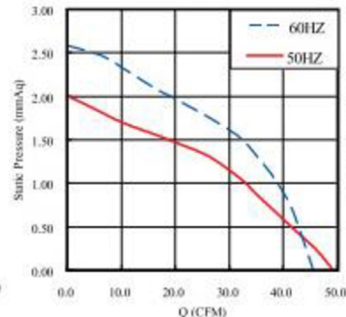
CA04009E



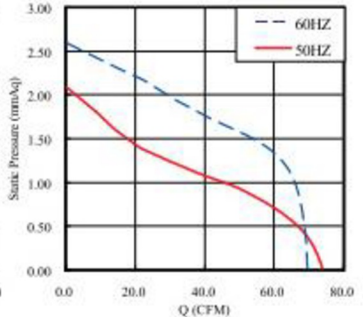
CA04015E



CA04019E



CA04029E

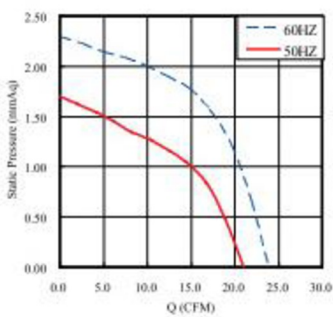


Size	Ø40mm
Housing	Aluminum
Impeller	Aluminum
Motor	AC Shaded Pole Type
Operating Temp.	0°C ~+45°C
Insulation	Class A

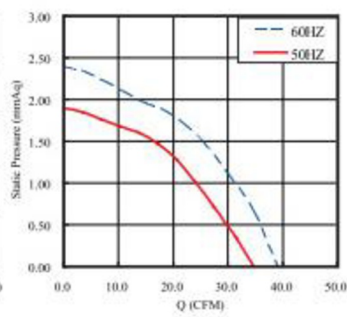
Model Number	Size (mm)			Voltage (V)	Frequency (Hz)	Current (A)	Power (W)	Speed (RPM)	Air Flow (CFM)	Pressure (mmH2O)	Noise (dB(A))	Weight (g)
	A	B	C									
CA04030V11_HWM	310	320	370	120	50/60	0.15/0.13	11/10	2600/2800	35/39	1.9/2.4	30/34	560
CA04030V22_HWM				230	50/60	0.09/0.07	11/9	2600/2800	35/39	1.9/2.4	30/34	
CA04035V11_HWM	360	370	425	120	50/60	0.15/0.13	10/9	2500/2400	49/46	2.0/2.6	33/31	600
CA04035V22_HWM				230	50/60	0.09/0.07	12/11	2500/2400	49/46	2.0/2.6	33/31	
CA04040V11_HWM	410	420	475	120	50/60	0.23/0.21	17/16	2400/2200	74/70	2.1/2.6	37/35	730
CA04040V22_HWM				230	50/60	0.10/0.09	13/13	2400/2200	74/70	2.1/2.6	37/35	

_ for B / S = Ball Bearing / Sleeve Bearing

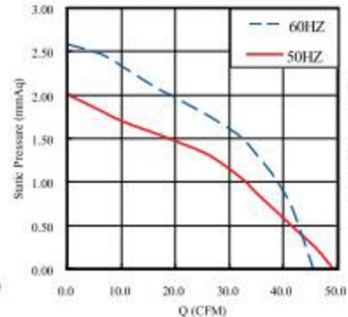
CA04009



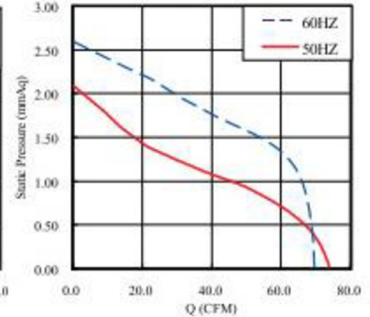
CA04015



CA04019

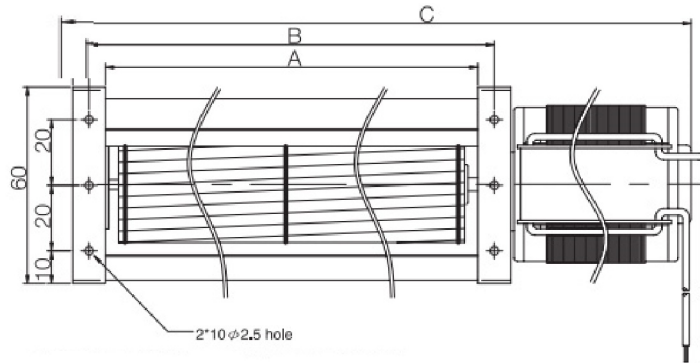


CA04029

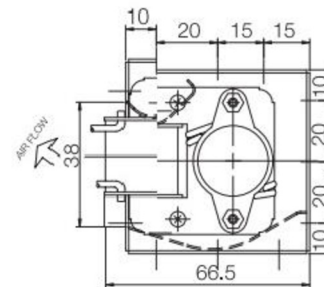




CA043E- Series



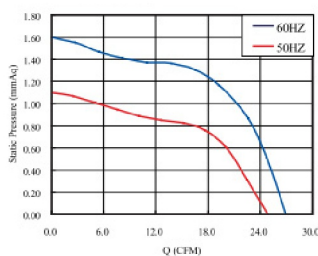
Size	Ø43mm
Housing	Aluminum
Impeller	Aluminum
Motor	AC Shaded Pole Type
Operating Temp.	0°C ~ +45°C
Insulation	Class A



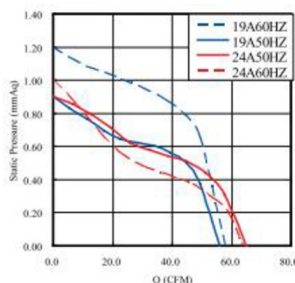
Model Number	Size (mm)			Voltage (V)	Frequency (Hz)	Current (A)	Power (W)	Speed (RPM)	Air Flow (CFM)	Pressure (mmH2O)	Noise (dB(A))	Weight (g)
	A	B	C									
CA04309V11_HWE	98	108	162	120	50/60	0.14/0.12	10/9	2600/3000	25/28	1.1/1.6	33/35	520
CA04309V22_HWE				230	50/60	0.08/0.07	10/9	2600/3000	25/28	1.1/1.6	33/35	
CA04315V11_HWE	160	170	222	120	50/60	0.15/0.13	11/10	2300/2200	42/42	1.2/1.2	35/35	550
CA04315V22_HWE				230	50/60	0.08/0.07	11/10	2500/2500	42/42	1.2/1.2	35/35	
CA04319V11_HWE	198	208	264	120	50/60	0.22/0.19	15/14	2400/2500	53/56	0.9/1.2	32/35	650
CA04319V22_HWE				230	50/60	0.09/0.08	13/12	2300/2000	53/56	0.9/1.2	32/35	
CA04324V11_HWE	250	260	315	120	50/60	0.22/0.20	16/15	2300/2000	67/70	0.9/1.0	34/33	680
CA04324V22_HWE				230	50/60	0.09/0.08	13/12	2200/1800	63/56	0.9/1.0	33/30	
CA04329V11_HWE	300	310	375	120	50/60	0.32/0.29	22/21	2500/2700	88/95	1.2/1.4	38/40	890
CA04329V22_HWE				230	50/60	0.14/0.13	19/18	2500/2500	88/88	1.2/1.4	3.7/37	
CA04335V11_HWE	360	370	435	120	50/60	0.34/0.32	23/23	2500/2500	117/117	1.2/1.3	38/38	920
CA04335V22_HWE				230	50/60	0.15/0.14	20/19	2400/2100	113/88	1.2/1.3	36/33	

_ for B / S = Ball Bearing / Sleeve Bearing

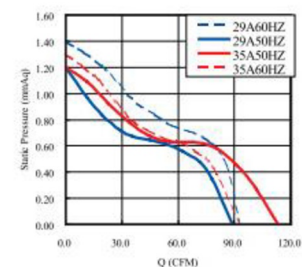
CA04309E



CA04019E

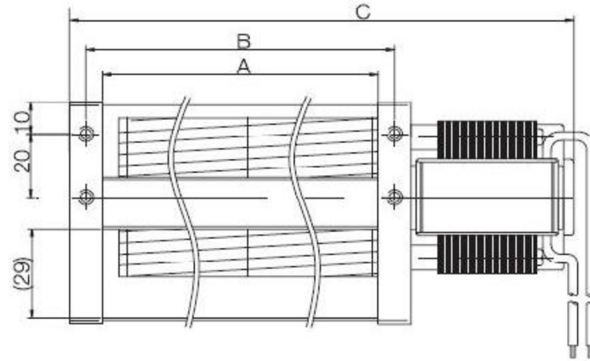


CA04329E

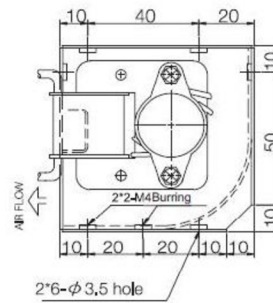




CA50E- Series



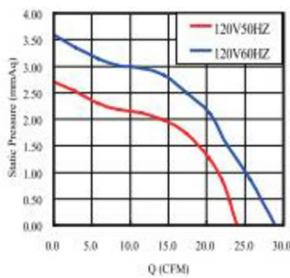
Size	Ø50mm
Housing	Aluminum
Impeller	Aluminum
Motor	AC Shaded Pole Type
Operating Temp.	0°C ~+45°C
Insulation	Class A



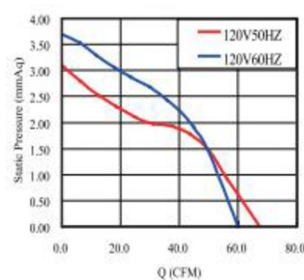
Model Number	Size (mm)			Voltage (V)	Frequency (Hz)	Current (A)	Power (W)	Speed (RPM)	Air Flow (CFM)	Pressure (mmH2O)	Noise (dB(A))	Weight (g)
	A	B	C									
CA05009V11_HWE	98	108	162	120	50/60	0.15/0.13	11/10	2300/2400	24/28	2.7/3.6	36/37	610
CA05009V22_HWE				230	50/60	0.09/0.07	11/10	2300/2400	24/28	2.7/3.6	36/37	
CA05019V11_HWE	198	208	267	120	50/60	0.23/0.21	18/16	2000/1600	67/60	3.1/3.7	36/33	770
CA05019V22_HWE				230	50/60	0.10/0.09	14/13	1900/1400	63/56	3.1/3.6	35/32	
CA0529V11_HWE	298	308	377	120	50/60	0.35/0.33	24/24	2200/1800	116/88	3.7/4.3	41/37	1100
CA0529V22_HWE				230	50/60	0.15/0.14	21/20	2100/1500	116/81	3.7/4.1	41/35	
CA0535V11_HWE	350	368	437	120	50/60	0.35/0.33	23/23	2100/1500	110/103	3.7/4.3	41/36	1200
CA0535V22_HWE				230	50/60	0.15/0.14	20/19	1900/1300	110/92	3.5/4.0	40/34	

_ for B / S = Ball Bearing / Sleeve Bearing

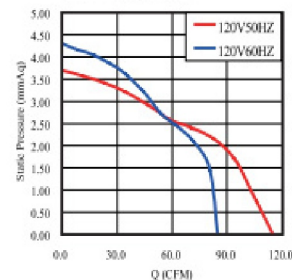
CA05009E



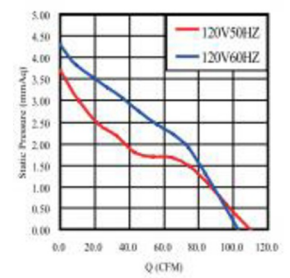
CA05019E



CA05029E

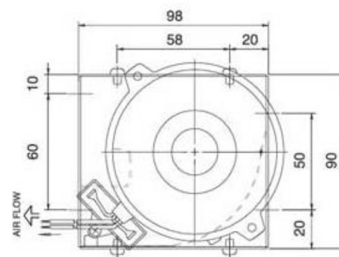
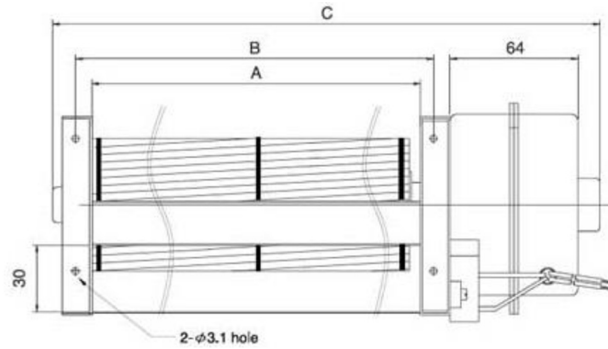


CA05035E





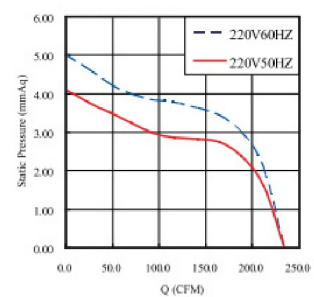
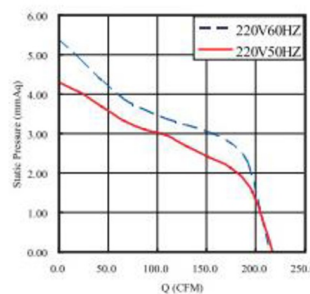
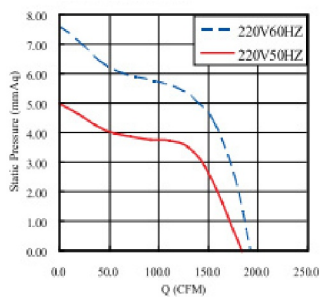
CA060C- Series



Size	Ø60mm
Housing	Aluminum
Impeller	Aluminum
Motor	AC Capacitv Type
Operating Temp.	0°C~+45°C
Insulation	Class A

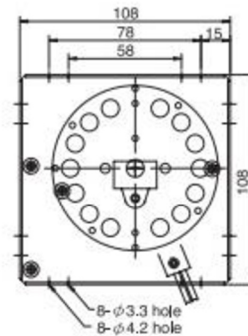
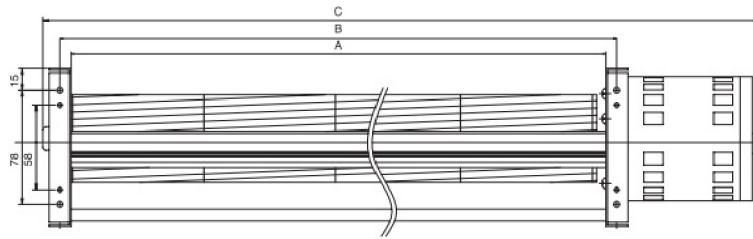
Model Number	Size (mm)			Voltage (V)	Frequency (Hz)	Current (A)	Power (W)	Speed (RPM)	Air Flow (CFM)	Pressure (mmH2O)	Noise (dB(A))	Weight (g)
	A	B	C									
CA06030_HWC	306	321	415	110	60	0.32	35	2800	194	7.6	54	1800
				120	60	0.33	39	2900	205	7.8	55	
				220	50/60	0.14/0.17	30/38	2500/2600	183/194	5.0/7.6	50/54	
				230	50	0.15	31	2600	183	5.0	50	
CA06036_HWC	368	383	447	110	60	0.34	38	2500	223	5.4	53	1850
				120	60	0.35	42	2600	240	6.7	54	
				220	50/60	0.15/0.18	32/40	2500/2500	219/223	4.5/5.4	53/53	
				230	50	0.16	34	2500	223	5.3	53	
CA06042_HWC	429	444	538	110	60	0.38	42	2400	240	4.8	52	1930
				120	60	0.39	47	2600	267	5.9	54	
				220	50/60	0.16/0.19	35/43	2400/2400	234/234	4.1/5.0	52/52	
				230	50	0.17	36	2500	252	4.4	53	

_ for B / S = Ball Bearing / Sleeve Bearing





CA060F- Series

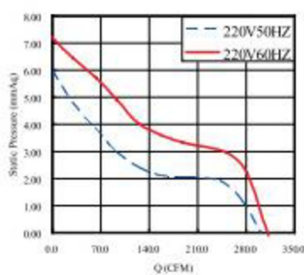


Size	Ø60mm
Housing	Aluminum
Impeller	Aluminum
Motor	AC Capacity Type
Operating Temp.	0°C~+45°C
Insulation	Class A

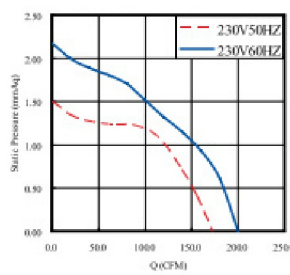
Model Number	Size (mm)			Voltage (V)	Frequency (Hz)	Current (A)	Power (W)	Speed (RPM)	Air Flow (CFM)	Pressure (mmH2O)	Noise (dB(A))	Weight (g)
	A	B	C									
CA06042V22_HWF	426	441	520	220	50/60	0.10/0.16	24/35	1400/1700	177/198	1.4/2.4	40/42	2800
				230	50/60	0.11/0.16	26/38	1400/1700	177/198	1.5/2.2	40/42	
CA06060V22_HWF	606	621	700	220	50/60	0.11/0.17	24/37	1400/1650	283/318	1.5/2.1	40/41	3200
				230	50/60	0.11/0.17	26/40	1400/1650	283/318	1.5/1.8	40/41	

_ for B / S = Ball Bearing / Sleeve Bearing

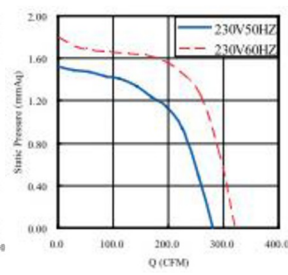
CA06042V22F



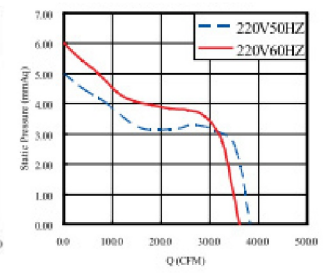
CA06042V22F

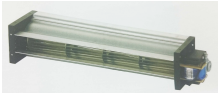


CA06060V22F

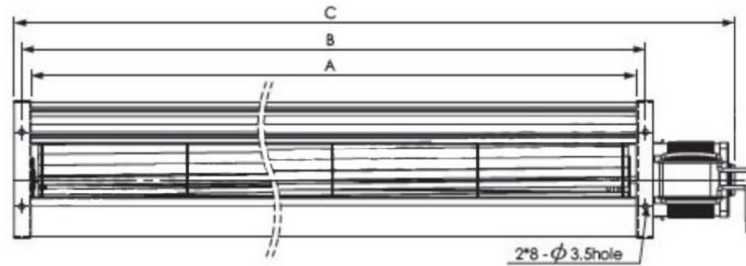


CA06060V22F

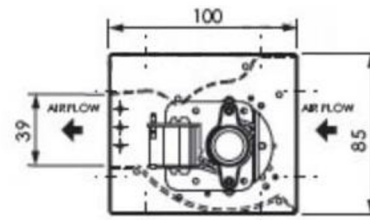




CA060M- Series

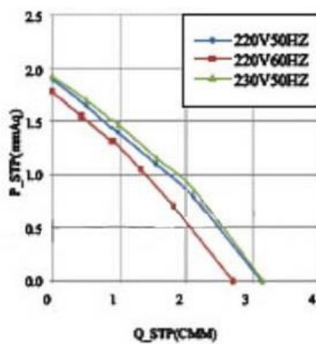


Size	Ø60mm
Housing	Aluminum
Impeller	Aluminum
Motor	AC Shaded Pole Type
Operating Temp.	0°C ~ +45°C
Insulation	Class A

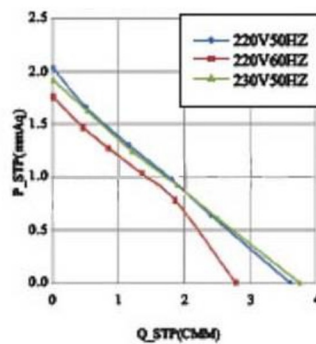


Model Number	Size (mm)			Voltage (V)	Frequency (Hz)	Current (A)	Power (W)	Speed (RPM)	Air Flow (CFM)	Pressure (mmH2O)	Noise dB(A)	Weight (kg)
	A	B	C									
CA06030V22BHWM	310	325	385	220	50/60	0.19/0.18	24/24	2450/2400	109.5/106.0	1.8/1.8	40/38	1.5
CA06036V22BHWM	370	385	445	220	50/60	0.19/0.18	25/25	2350/2100	127.2/98.9	2.0/1.8	37/33	1.6
CA06042V22BHWM	430	445	505	220	50/60	0.20/0.19	26/25	2250/1800	141.3/109.5	2.1/1.6	39/30	1.7
CA06060V22BHWM	610	625	690	220	50/60	0.39/0.36	46/45	2450/2250	215.5/187.2	2.4/2.1	44/36	2.0

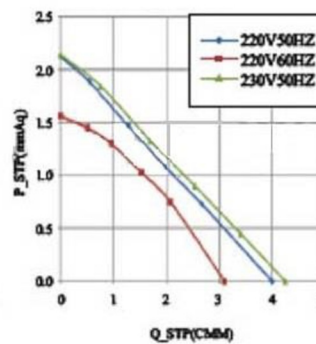
CA06030M



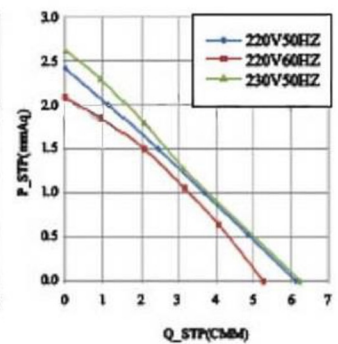
CA06036M



CA06042M

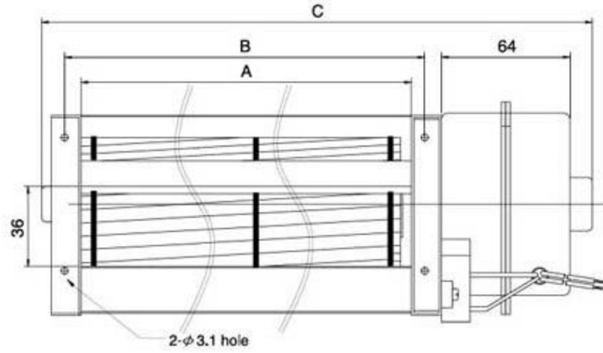


CA06060M

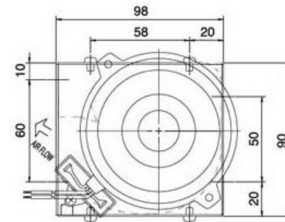




CA060V- Series



Size	Ø60mm
Housing	Aluminum
Impeller	Aluminum
Motor	AC Capacity Type
Operating Temp.	0°C ~ +45°C
Insulation	Class A

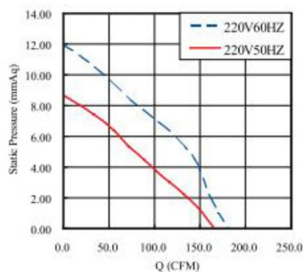


Model Number	Size (mm)			Voltage (V)	Frequency (Hz)	Current (A)	Power (W)	Speed (RPM)	Air Flow (CFM)	Pressure (mmH2O)	Noise dB(A)	Weight (g)
	A	B	C									
CA06030__HWV	306	321	415	110	60	0.34	38	2700	183	12	53	1770
				120	60	0.34	41	2800	205	12	53	
				220	50/60	0.15/0.18	32/40	2500/2700	166/183	9/12	50/53	
				230	50	0.15	33	2600	181	10	52	
CA06036__HWV	368	383	477	110	60	0.37	41	2600	209	11	54	1860
				120	60	0.38	46	2700	235	12	56	
				220	50/60	0.15/0.19	35/43	2500/2600	195/208	8/11	53/54	
				230	50	0.16	36	2500	212	10	53	
CA06042__HWV	429	444	538	110	60	0.38	41	2500	247	12	54	1930
				120	60	0.39	46	2600	265	11.5	55	
				220	50/60	0.16/0.2	35/43	2400/2400	237/237	9/11	53/53	
				230	50	0.16	37	2500	247	10	51	

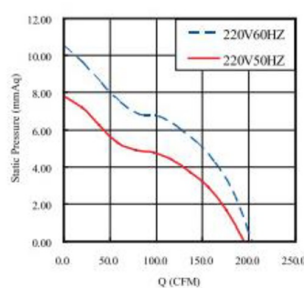
_ for V11/V22 AV Voltage

_ for B / S = Ball Bearing / Sleeve Bearing

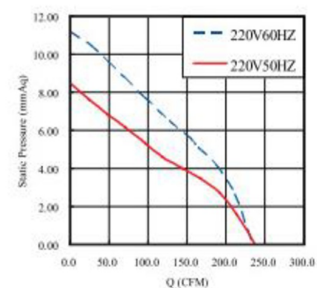
CA06030



CA06036

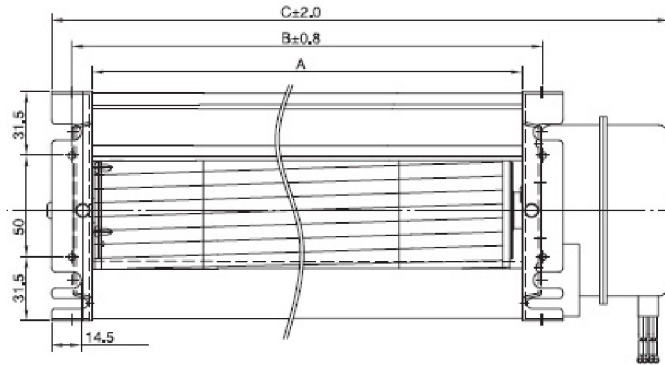


CA06042

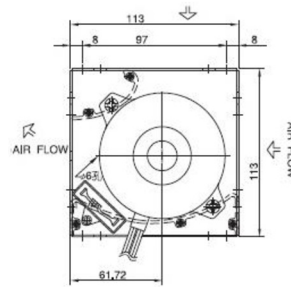




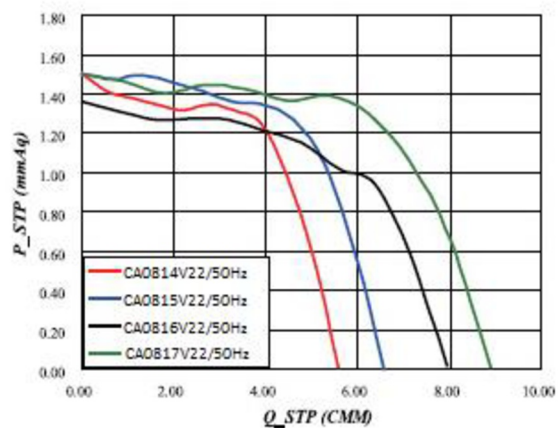
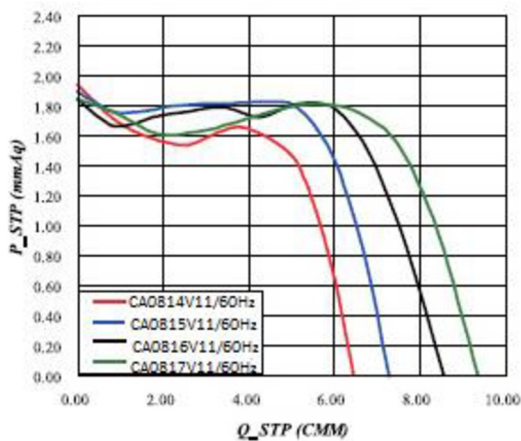
CA081H- Series

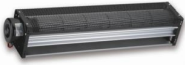


Size	Ø81mm
Housing	Aluminum
Impeller	Aluminum
Motor	AC Capacity Type
Operating Temp.	0°C ~ +45°C
Insulation	Class A

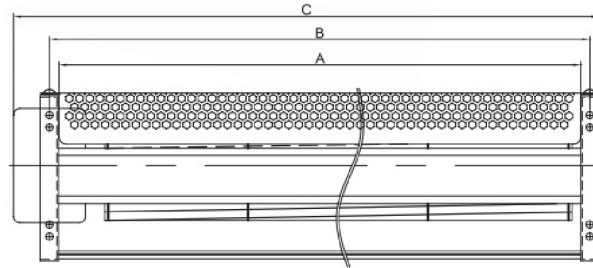


Model Number	Size (mm)			Voltage (V)	Frequency (Hz)	Current (A)	Power (W)	Speed (RPM)	Air Flow (CFM)	Pressure (mmH2O)	Noise (dB(A))	Weight (kg)
	A	B	C									
CA08142V11BHWH	420	440	512	120	50/60	0.21/0.25	24/29	1300/1400	205/216	1.5/1.8	43/44	2.3
CA08142V22BHWH				230	50/60	0.11/0.13	24/28	1300/1400	205/216	1.5/1.8	43/44	
CA08150V11BHWH	500	520	612	120	50/60	0.21/0.25	24/30	1250/1300	223/240	1.5/1.8	42/43	2.4
CA08150V22BHWH				230	50/60	0.11/0.13	24/29	1250/1300	223/240	1.5/1.8	42/43	
CA08160V11BHWH	600	620	710	120	50/60	0.21/0.27	27/32	1300/1400	286/293	1.3/1.8	43/44	3.0
CA08160V22BHWH				230	50/60	0.11/0.13	24/30	1250/1300	280/286	1.3/1.8	42/43	
CA08170V11BHWH	700	720	810	120	50/60	0.20/0.27	26/33	1250/1300	329/332	1.6/1.8	42/43	3.2
CA08170V22BHWH				230	50/60	0.1/0.2	25/30	1200/1200	304/304	1.5/1.8	41/41	

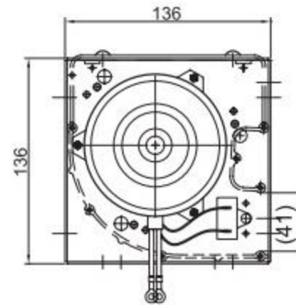




CA090F- Series

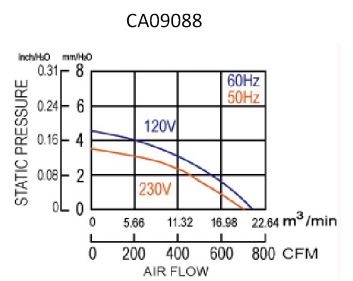
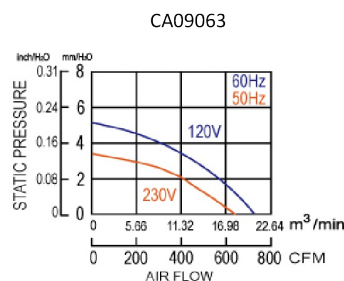
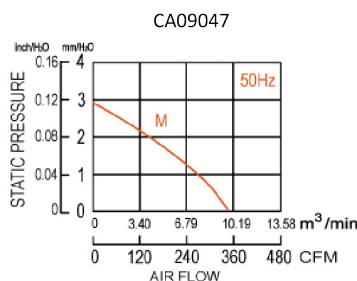
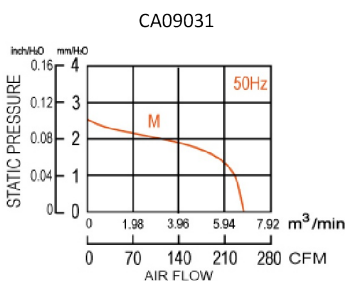


Size	Ø90mm
Housing	Aluminum
Impeller	Aluminum
Motor	AC Capacity Type
Operating Temp.	0°C ~ +45°C
Insulation	Class A



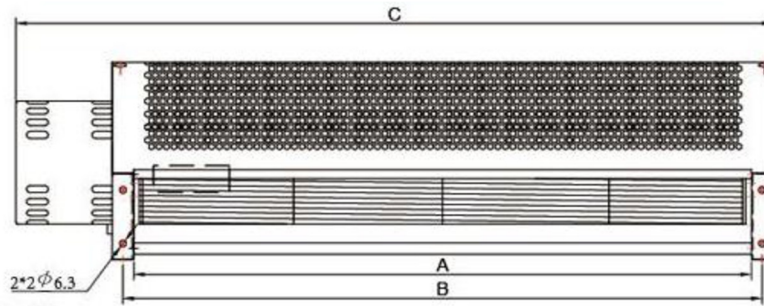
Model Number	Size (mm)			Voltage (V)	Frequency (Hz)	Current (A)	Power (W)	Speed (RPM)	Air Flow (m³/min)	Pressure (mmH2O)	Noise (dB(A))	Weight (kg)
	A	B	C									
CA09031DVBHWF	360	375	415	110	60	0.30	32	1500	6.3	3.1	49	2.5
				120	50/60	0.29/0.32	32/37	1350/1550	5.8/6.6	2.3/3.4	47/53	
				220	50/60	0.15/0.16	29/33	1350/1550	5.8/6.3	2.3/3.1	47/49	
				230	50	0.15	32	1350	5.8	2.3	47	
CA09047VDVBHWF	525	540	580	110	60	0.33	35	1250	8.4	2.6	47	2.9
				120	50/60	0.32/0.36	36/42	1200/1250	8.1/8.4	2.5/3.3	46/47	
				220	50/60	0.16/0.18	32/37	1200/1300	8.1/8.6	2.5/3.0	46/48	
				230	50	0.16	34	1250	8.4	2.6	47	
CA09063VDVBHWF	680	695	756	110	60	0.68	71	1700	15.1	4.2	54	4.4
				120	60	0.70	78	1700	15.1	4.2	54	
				220	50/60	0.38/0.36	59/74	1400/1700	12.9/15.1	3.0/4.2	49/54	
				230	50	0.40	64	1500	13	3.0	50	
CA09088DVBHWF	930	945	1005	110	60	0.80	85	1600	17.9	3.4	56	4.7
				120	60	0.82	93	1600	17.9	3.4	56	
				220	50/60	0.41/0.42	69/88	1400/1700	16.6/19.4	2.8/4.0	52/57	
				230	50	0.43	73	1500	16.8	3.1	54	

_ for B / S = Ball Bearing / Sleeve Bearing

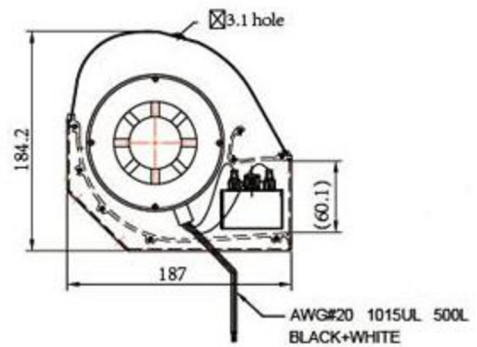




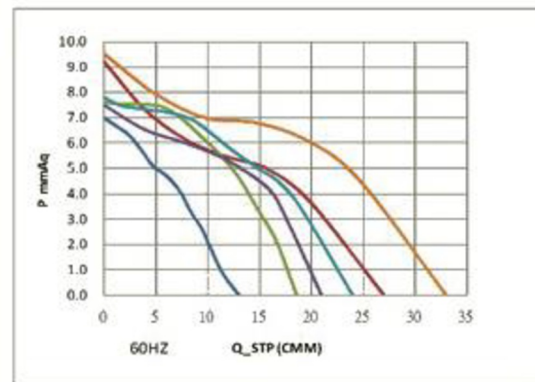
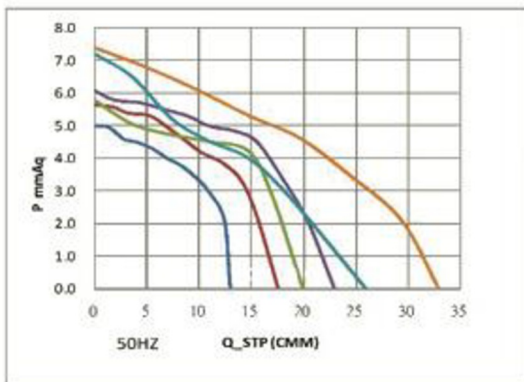
CA110F- Series

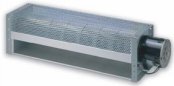


Size	Ø110mm
Housing	Aluminum
Impeller	Aluminum
Motor	AC Type
Operating Temp.	0°C ~ +45°C
Insulation	Class A

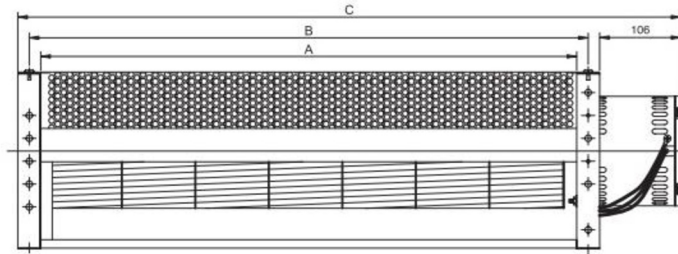


Model Number	Size (mm)			Voltage (V)	Frequency (Hz)	Current (A)	Power (W)	Speed (RPM)	Air Flow (CFM)	Pressure (mmH2O)	Noise (dB(A))	Weight (kg)
	A	B	C									
CA11037V22BHWF	385	405	498	220	50/60	0.27/0.30	60/70	1100/1200	424/459	5.0/7.0	52/54	5.0
CA11048V22BHWF	495	515	608	220	50/60	0.40/0.50	90/105	1200/1300	600/636	5.6/7.5	56/58	5.5
CA11052V22BHWF	535	555	648	220	50/60	0.40/0.50	90/110	1200/1300	707/742	5.4/7.5	56/58	6.0
CA11060V22BHWF	625	645	755	220	50/60	0.45/0.57	105/130	1250/1300	813/848	6.1/7.8	57/58	6.4
CA11067V22BHWF	685	705	810	220	50/60	0.50/0.60	102/126	1200/1300	919/954	7.2/9.2	56/58	6.7
CA11088V22BHWF	897	917	1010	220	50/60	0.60/0.80	136/175	1200/1200	1166/1166	7.4/9.5	58/58	8.1

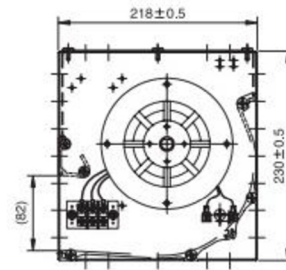




CA150E- Series

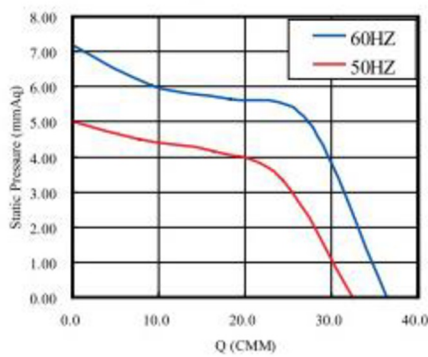


Size	Ø150mm
Housing	Aluminum
Impeller	Aluminum
Motor	AC Type
Operating Temp.	0°C~+45°C
Insulation	Class A

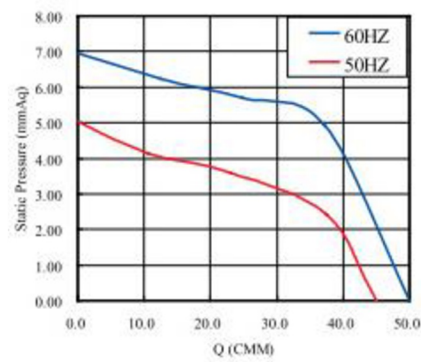


Model Number	Size (mm)			Voltage (V)	Frequency (Hz)	Current (A)	Power (W)	Speed (RPM)	Air Flow (CFM)	Pressure (mmH2O)	Noise dB(A)	Weight (kg)
	A	B	C									
CA15068V22BHWE	700	730	886	220	50/60	1.2/1.1	156/210	950/1150	1168/1274	5.0/7.2	59/63	13.6
CA15098V22BHWE	1000	1030	1166	220	50/60	1.3/1.3	190/265	900/1100	1593/1770	5.0/6.9	59/63	15.8

CA15068V22

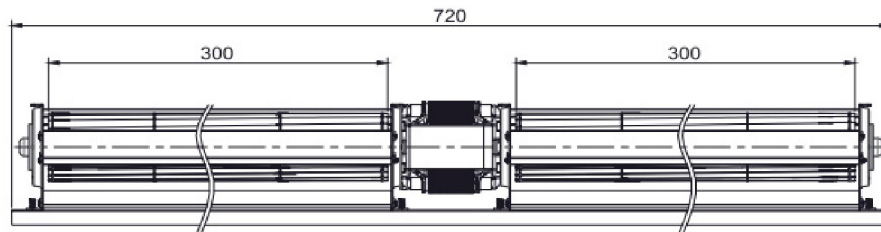


CA15098V22

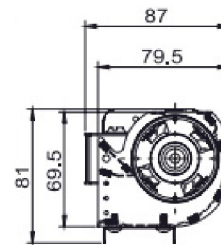




CA453030Q- Series



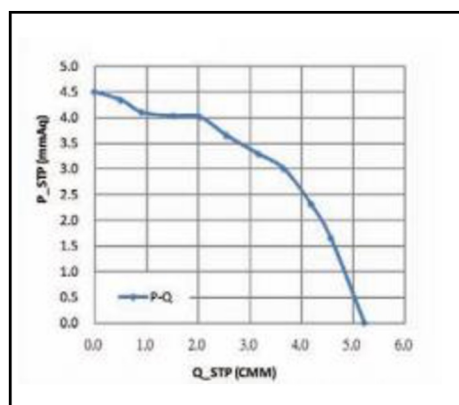
Size	Ø45mm
Housing	Aluminum
Impeller	Aluminum
Motor	AC Type
Operating Temp.	0°C~+45°C
Insulation	Class A



Model Number	Voltage	Frequency	Current	Power	Speed	Air Flow	Pressure	Noise	Weight
	(V)	(Hz)	(A)	(W)	(RPM)	(CFM)	(mmH2O)	dB(A)	(g)
CA453030V22_HWQ	230	50	0.30	39	1650	184	4.5	47	2300

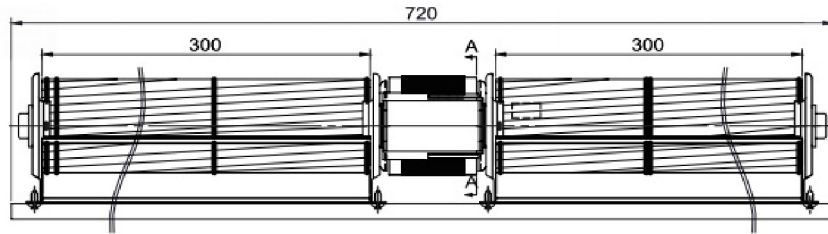
_ for B / S = Ball Bearing / Sleeve Bearing

CA0453030

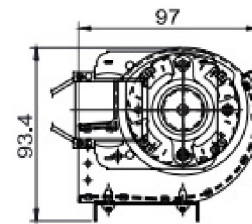




CA603030Q- Series

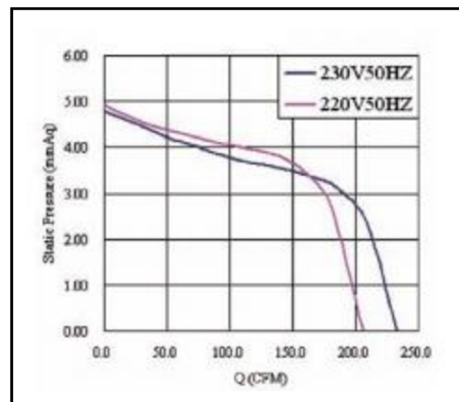


Size	Ø60mm
Housing	Aluminum
Impeller	Aluminum
Motor	AC Type
Operating Temp.	0°C~+45°C
Insulation	Class A



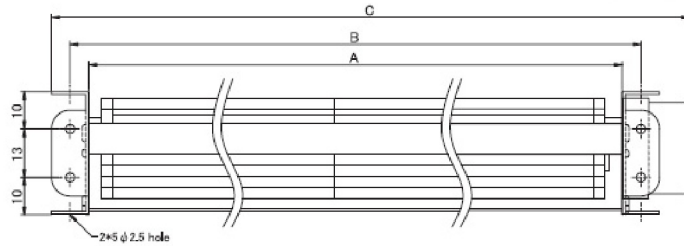
Model Number	Voltage	Frequency	Current	Power	Speed	Air Flow	Pressure	Noise	Weight
	(V)	(Hz)	(A)	(W)	(RPM)	(CFM)	(mmH2O)	dB(A)	(g)
CA603030V22BHWQ	220	50	0.43	50	1300	205	4.80	40	2800
	230	50	0.50	56	1400	234	5.80	43	

CA603030Q

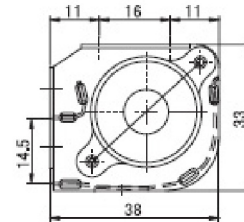




CD025E- Series

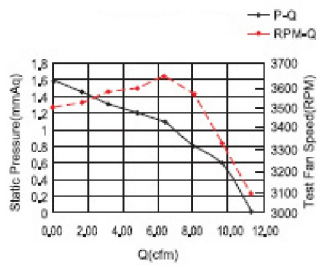


Size	Ø25mm
Housing	Aluminum
Impeller	Aluminum
Motor	DC Brushless type
Operating Temp.	0°C ~ +45°C
Insulation	Class A

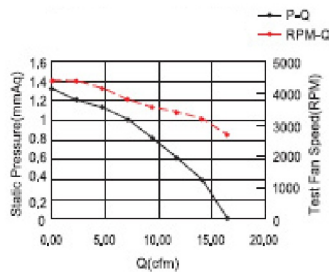


Model Number	Size (mm)			Voltage (V)	Current (A)	Power (W)	Speed (RPM)	Air Flow (CFM)	Pressure (mmH2O)	Noise dB(A)	Weight (g)
	A	B	C								
CD02509V12BHWE	98	108	129	12	0.11	1.32	3100	11	1.60	32	95
CD02515V12BHWE	160	170	191	12	0.13	1.56	2700	16	1.4	29	120
CD02519V12BHWE	198	208	229	12	0.14	1.68	2500	18	1.3	28	140
CD02524V12BHWE	250	260	282	12	0.20	2.4	2600	25	1.8	32	160
CD02529V12BHWE	298	308	330	12	0.21	2.52	2500	30	1.6	33	180

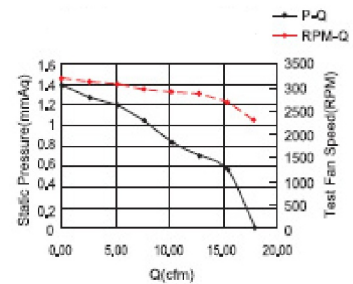
CD02509V12



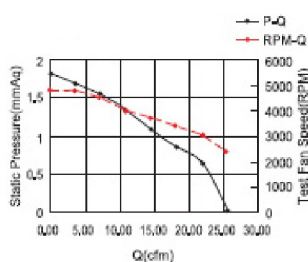
CD02515V12



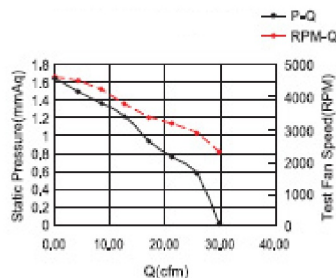
CD02519V12



CD02524V12

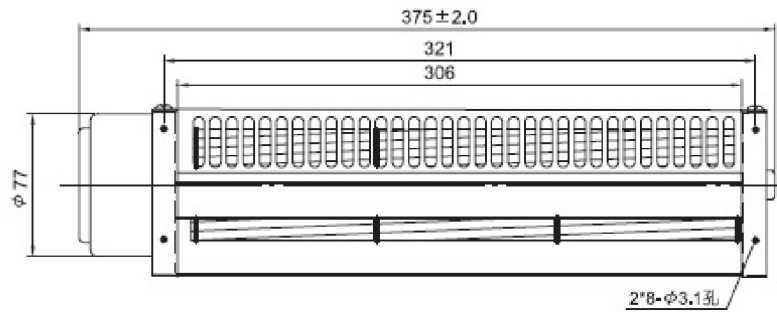


CD02529V12

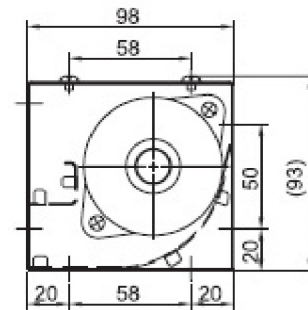




CD025V- Series



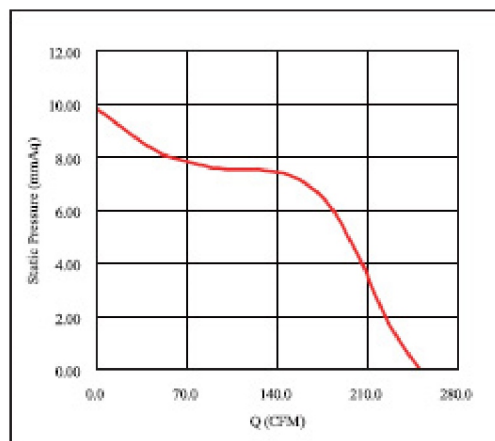
Size	Ø60mm
Housing	Aluminum
Impeller	Aluminum
Motor	DC Brushless 3 Phase Motor
Operating Temp.	0°C ~ +45°C
Insulation	Class A



Model Number	Size (mm)			Voltage (V)	Current (A)	Power (W)	Speed (RPM)	Air Flow (CFM)	Pressure (mmH2O)	Noise (dB(A))	Weight (g)
	A	B	C								
CD06030V24_HWE	306	321	372	24	2.3	55.2	3500	265	9.80	62	1400
CD06030V24BHVHT				48	1.1	52.8	3500	265	9.80	62	1400

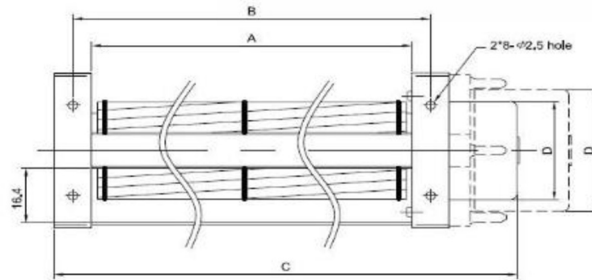
_ for B / S = Ball Bearing / Sleeve Bearing

Air Performance

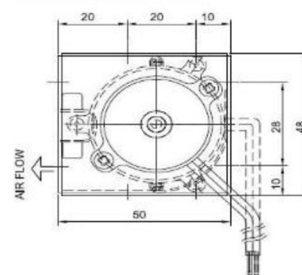




CD030E / CD0303F- Series

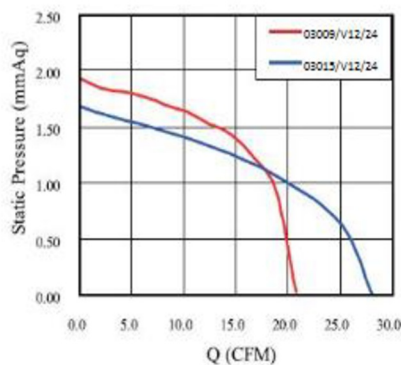


Size	Ø30mm
Housing	Aluminum
Impeller	Aluminum
Motor	CD030E - DC Brushless type CD0303F – DC 3-Phase-Motor
Operating Temp.	0°C~+45°C
Insulation	Class A

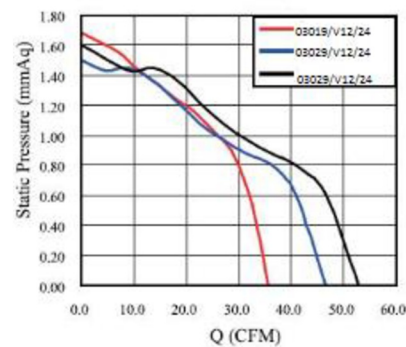


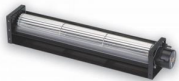
Model Number	Size (mm)			Voltage (V)	Current (A)	Power (W)	Speed (RPM)	Air Flow (CFM)	Pressure (mmH2O)	Noise (dB(A))	Weight (g)
	A	B	C								
CD03009V12BHWE	98	108	134	12	0.15	1.8	3200	21	1.9	29	180
CD03009V24BHWE				24	0.18	4.32					
CD03015V12BHWE	160	170	196	12	0.16	1.92	3100	28	1.7	30	210
CD03015V24BHWE				24	0.15	3.6					
CD03019V12BHWE	198	208	234	12	0.2	2.4	2900	35	1.7	31	230
CD03019V24BHWE				24	0.16	1.92					
CD03029V12BHWE	300	310	336	12	0.22	2.64	2600	45	1.5	33	290
CD03029V24BHWE				24	0.2	4.8					
CD303030V24B3HWF (Double Fan)	630	640	680	24	0.22	5.28	2850	113	1.8	36	580
CD303535V24B3HWF (Double Fan)	730	740	780		0.25	6	2750	137	1.7	35	630
CD304040V24B3HWF (Double Fan)	830	840	880		0.28	6.72	2650	148	1.6	34	690

CD03009/CD03015

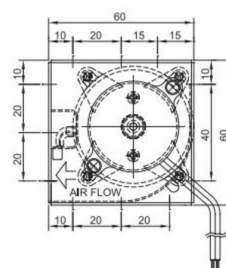
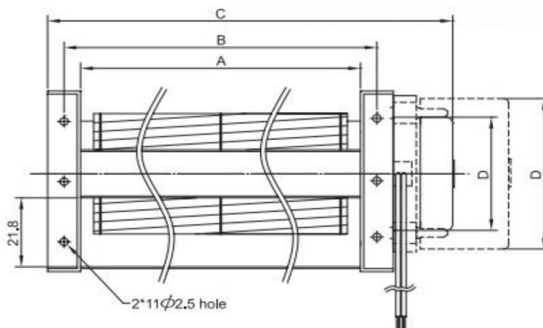


CD03019/CD03024/CD03029





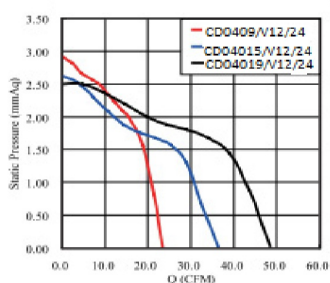
CD040E / CD0403E / CD0403F- Series



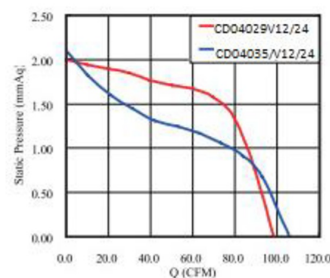
Size	Ø40mm
Housing	Aluminum
Impeller	Aluminum
Motor	CD 040E - DC Brushless type CD0403E – DC 3-Phase-Motor CD0403F – DC 3-Phase-Motor
Operating Temp.	0°C ~ +45°C
Insulation	Class A

Model Number	Size (mm)			Voltage (V)	Current (A)	Power (W)	Speed (RPM)	Air Flow (CFM)	Pressure (mmH2O)	Noise (dB(A))	Weight (g)
	A	B	C								
CD04009V12BHWE	98	108	144	12	0.20	2.40	3000	25	2.9	33	220
CD04009V24BHWE				24	0.15	3.6					
CD04015V12BHWE	160	170	206	12	0.25	3.0	2600	39	2.6	31	260
CD04015V24BHWE				24	0.20	4.80					
CD04019V12BHWE	198	208	246	12	0.30	3.6	2500	50	2.5	33	310
CD04019V24BHWE				24	0.20	4.8					
CD04029V12BHWE	300	310	348	12	0.40	4.8	2300	74	2.0	33	410
CD04029V24BHWE				24	0.20	4.8					
CD04030V24B3HWE	300	310	348	24	0.30	7.2	2600	92	3.0	39	440
CD04035V24B3HWE	360	370	400		0.32	7.68	2450	106	2.6	38	470
CD04040V24B3HWE	410	420	450		0.34	8.16	2300	124	2.5	37	510
CD403030V24B3HWF (Double Fan)	630	640	660		0.26	6.24	1800	131	1.4	39	690
CD403535V24B3HWF (Double Fan)	730	740	760		0.27	6.48	1750	149	1.4	38	770
CD404040V24B3HWF (Double Fan)	830	840	860		0.28	6.72	1600	163	1.3	37	830

CD0409/15/19E

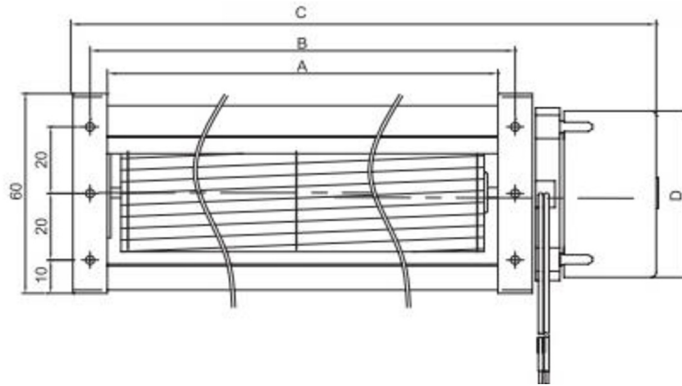


CD0429/35E

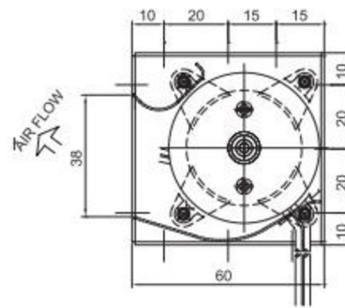




CD043E- Series



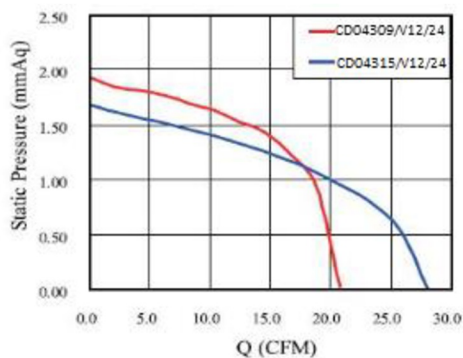
Size	Ø43mm
Housing	Aluminum
Impeller	Aluminum
Motor	DC Brushless type
Operating Temp.	0°C ~ +45°C
Insulation	Class A



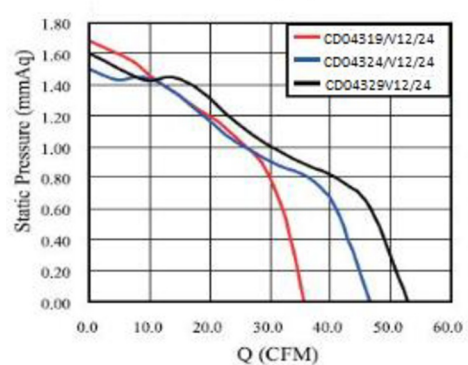
Model Number	Size (mm)			Voltage (V)	Current (A)	Power (W)	Speed (RPM)	Air Flow (CFM)	Pressure (mmH2O)	Noise (dB(A))	Weight (g)
	A	B	C								
CD04309V12_HWE	98	108	144	12	0.22	2.64	2800	25	1.80	36	220
CD04309V24_HWE				24	0.15	3.6					
CD04315V12_HWE	160	170	208	12	0.35	4.20	2500	42	1.2	37	270
CD04315V24_HWE				24	0.20	4.80					
CD04319V12_HWE	198	208	246	12	0.35	4.20	2400	53	1.0	39	310
CD04319V24_HWE				24	0.20	4.80					
CD04324V12_HWE	250	260	298	12	0.42	5.04	2200	60	0.7	34	350
CD04324V24_HWE				24	0.22	5.28					
CD04329V24B3HWE	300	310	340	24	0.33	7.92	2500	88	1.9	37	420
CD04335V24B3HWE	360	370	400		0.35	8.40	2400	99	1.6	37	440

_ for B / S = Ball Bearing / Sleeve Bearing

CD04309/15

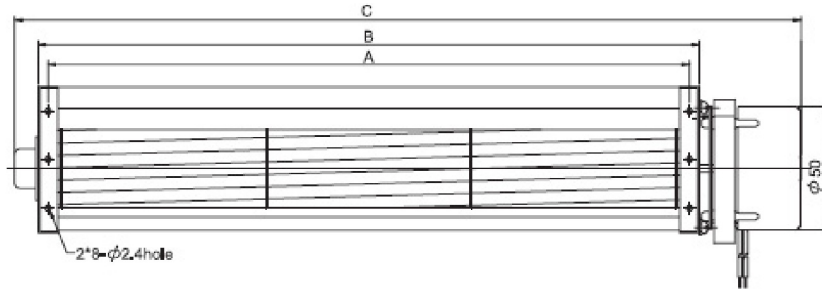


CD04319/24/29

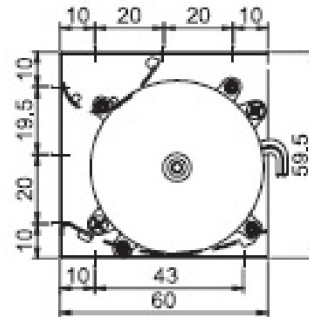




CD043Q- Series



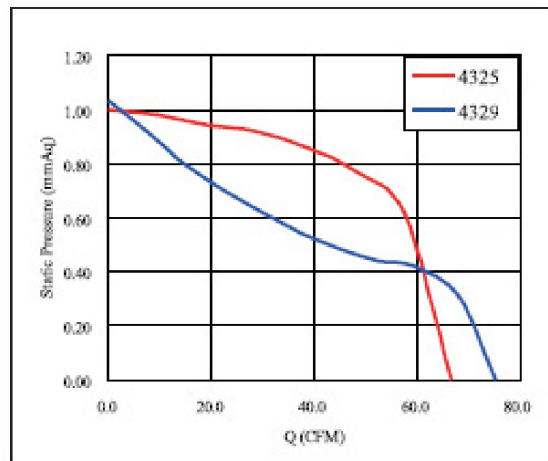
Size	Ø43mm
Housing	Aluminum
Impeller	Aluminum
Motor	DC Brushless type
Operating Temp.	0°C ~ +45°C
Insulation	Class A



Model Number	Size (mm)			Voltage (V)	Current (A)	Power (W)	Speed (RPM)	Air Flow (CFM)	Pressure (mmH2O)	Noise dB(A)	Weight (g)
	A	B	C								
CD04325V12_HWQ	260	268	324	12	0.45	5.4	3000	67	1.0	37	480
CD04325V12_HWQ				24	0.30	7.2					
CD04329V12_HWQ	296	304	360	12	0.40	4.8	2800	74	1.1	39	500
CD04329V24_HWQ				24	0.30	7.2					

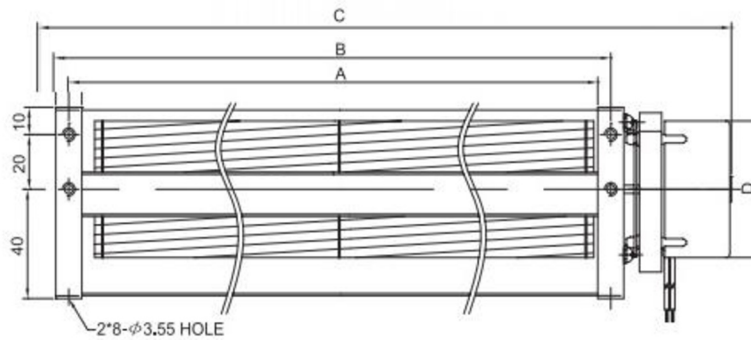
_ for B / S = Ball Bearing / Sleeve Bearing

Air Performance

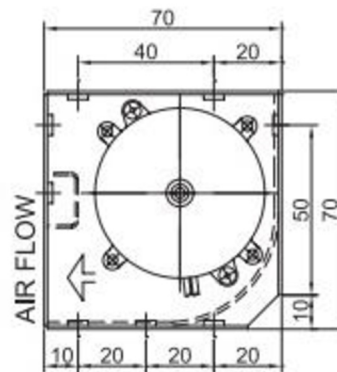




CD050E- Series



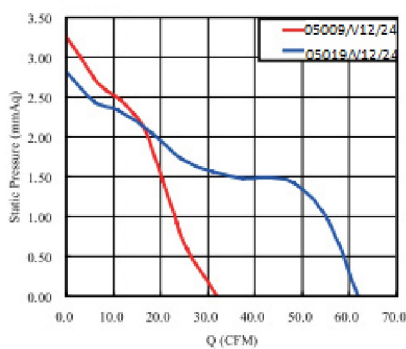
Size	Ø50mm
Housing	Aluminum
Impeller	Aluminum
Motor	DC Brushless type
Operating Temp.	0°C ~ +45°C
Insulation	Class A



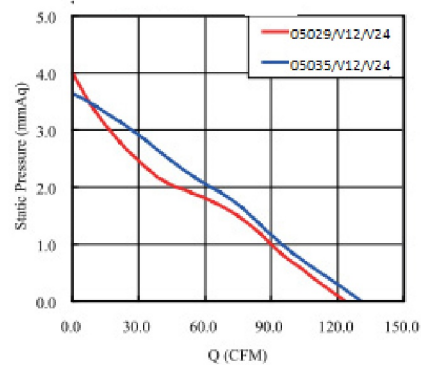
Model Number	Size (mm)			Voltage (V)	Current (A)	Power (W)	Speed (RPM)	Air Flow (CFM)	Pressure (mmH2O)	Noise dB(A)	Weight (g)
	A	B	C								
CD05009V12_HWE	98	108	155	12	0.30	3.6	2800	32	3.3	36	330
CD05009V24_HWE				24	0.18	4.32					
CD05019V12_HWE	198	208	255	12	0.47	5.64	2000	63	2.6	34	450
CD05019V24_HWE				24	0.24	5.76					
CD05029V12_HWE	298	308	360	12	0.65	7.8	2400	124	4.0	43	700
CD05029V24_HWE				24	0.40	9.6					
CD05035V12_HWE	358	368	420	12	0.75	9.0	2300	131	3.6	42	7700
CD05035V24_HWE				24	0.45	10.8					

_ for B / S = Ball Bearing / Sleeve Bearing

CD05009/05019

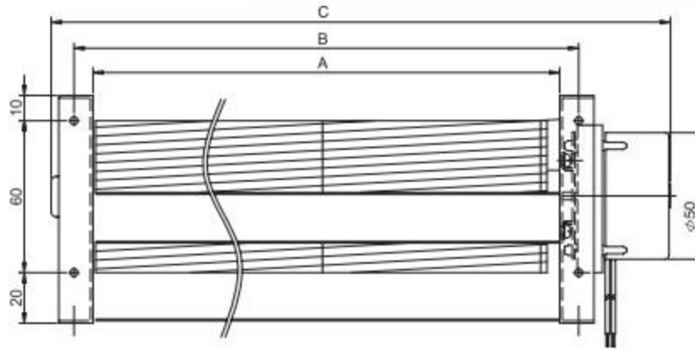


CD05029/035

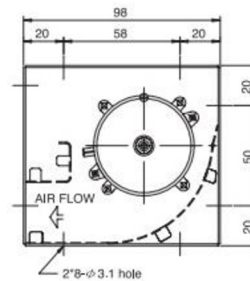




CD060E- Series



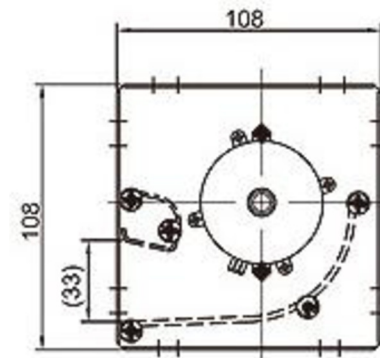
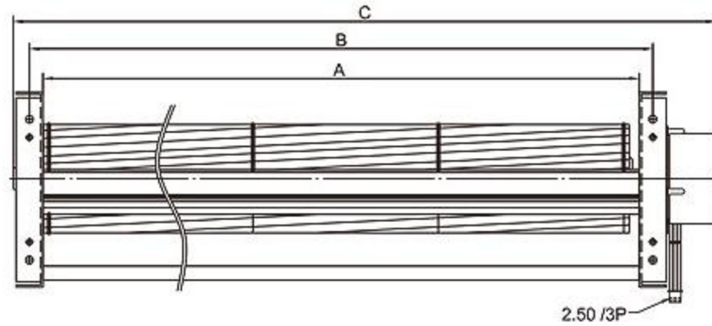
Size	Ø60mm
Housing	Aluminum
Impeller	Aluminum
Motor	DC 3-Phase-Motor
Operating Temp.	0°C~+45°C
Insulation	Class A



Model Number	Size (mm)				Voltage (V)	Current (A)	Power (W)	Speed (RPM)	Air Flow (CFM)	Pressure (mmH2O)	Noise dB(A)	Weight (g)
	A	B	C	D								
CD06012V24B3HWE	124	139	168	38	24	0.35	8.4	2500	67	4.4	44	500
CD06018V24B3HWE	184	199	228	38	24	0.40	9.6	2200	88	3.2	42	580
CD06024V24B3HWE	245	260	305	56	24	0.42	10.1	2100	117	3.6	41	850
CD06030V24B3HWE	306	320	365	56	24	0.46	11.0	2000	145	3.5	41	930
CD06036V24B3HWE	365	380	425	56	24	0.51	12.2	1950	166	3.4	40	1000
CD06042V24B3HWE	425	440	485	56	24	0.53	12.7	1900	187	3.3	40	1080
CD06060V24B3HWG	610	625	370	56	24	0.63	15.1	1650	244	2.5	39	1250
CD6036X2V24B3HWG	750	765	810	56	24	0.69	16.6	1700	272	2.6	40	1420
CD6042X2V24B3HWG	870	885	930	56	24	0.78	18.7	1600	293	2.5	41	1550



CD060FT- Series

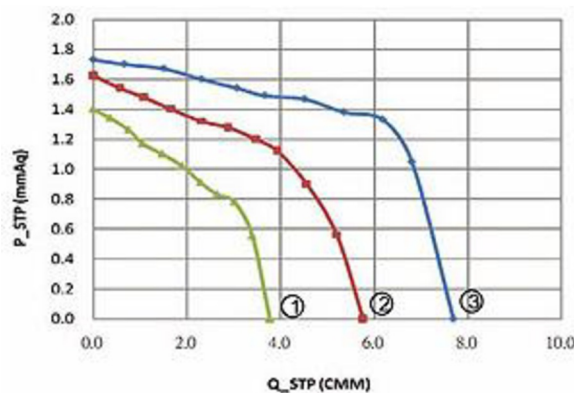


Size	Ø60mm
Housing	Aluminum
Impeller	Aluminum
Motor	DC Brushless 3 Phase Motor
Operating Temp.	0°C~+45°C
Insulation	Class A

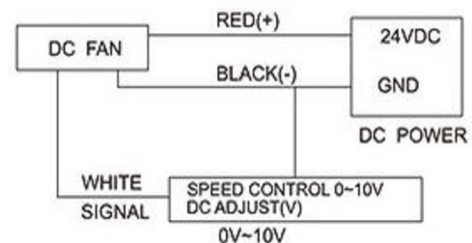
Model Number	Size (mm)			Voltage (V)	VC (V)	Current (A)	Power (W)	Speed (RPM)	Air Flow (CFM)	Pressure (mmH2O)	Noise (dB(A))	Weight (Kg)
	A	B	C									
CD06030V24BHVFT	306	321	372	24	DC 0~10V	0.25	6.0	1500	137 ○,1	1.4	36	1.0
CD06042V24BHVFT	426	441	492	24	DC 0~10V	0.40	9.6	1500	201 ○,2	1.6	40	1.2
CD06060V24BHVFT	606	621	671	24	DC 0~10V	0.73	17.5	1500	272 ○,3	1.7	42	1.5

_ for B / S = Ball Bearing / Sleeve Bearing

Air Performance

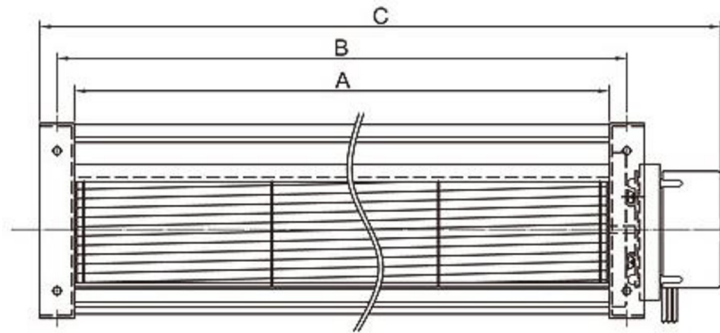


Wiring Diagram

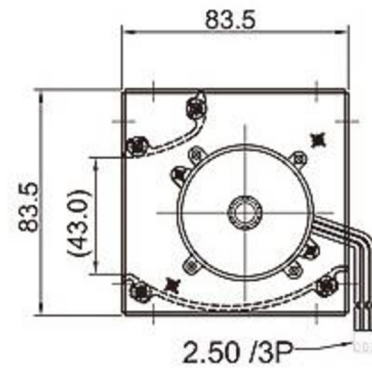




CD060HT- Series



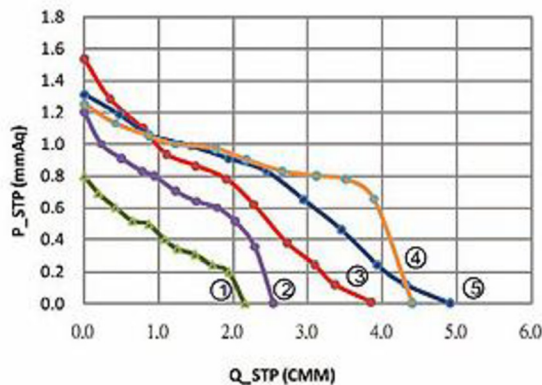
Size	∅60mm
Housing	Aluminum
Impeller	Aluminum
Motor	DC Brushless 3 Phase Motor
Operating Temp.	0°C~+45°C
Insulation	Class A



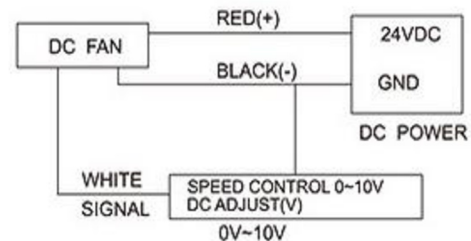
Model Number	Size (mm)			Voltage (V)	VC (V)	Current (A)	Power (W)	Speed (RPM)	Air Flow (CFM)	Pressure (mmH2O)	Noise dB(A)	Weight (g)	
	A	B	C										
CD06030V24BLVHT	306	321	372	24	DC 0~10V	0.23	5.52	1800	74	0,1	0.8	33	840
CD06030V24BHVHT	306	321	372	24	DC 0~10V	0.37	8.88	2200	88	0,2	1.2	41	840
CD06042V24BLVHT	426	441	492	24	DC 0~10V	0.35	8.40	1800	134	0,3	1.5	37	970
CD06042V24BHVHT	426	441	492	24	DC 0~10V	0.57	13.68	2200	155	0,4	1.2	42	970
CD06060V24BLVHT	606	621	671	24	DC 0~10V	0.47	11.28	1800	173	0,5	1.3	38	1100

_ for B / S = Ball Bearing / Sleeve Bearing

Air Performance

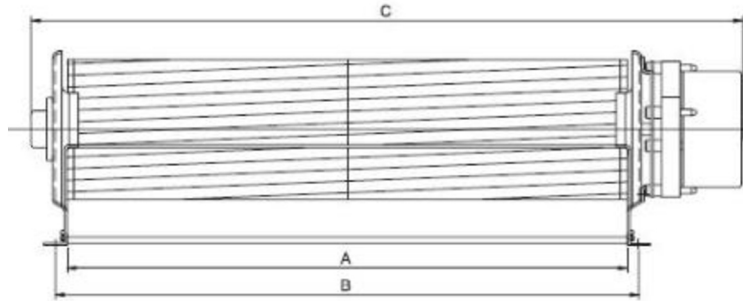


Wiring Diagram

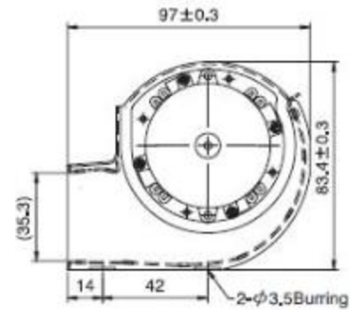




CD060Q- Series



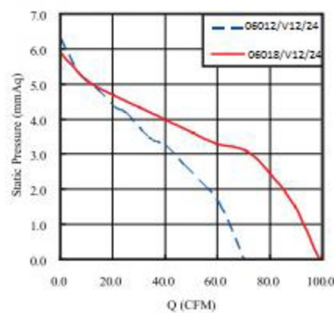
Size	Ø60mm
Housing	Aluminum
Impeller	Aluminum
Motor	DC Brushless Motor
Operating Temp.	0°C ~ +45°C
Insulation	Class A



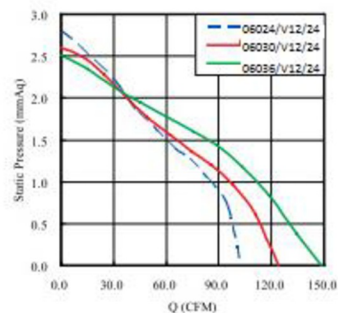
Model Number	Size (mm)			Voltage (V)	Current (A)	Power (W)	Speed (RPM)	Air Flow (CFM)	Pressure (mmH2O)	Noise (dB(A))	Weight (g)
	A	B	C								
CD06012V12BHWQ	120	130	185	12	0.65	7.8	2500	71	6.3	49	520
CD06012V24BHWQ				24	0.40	9.6					
CD06018V12BHWQ	180	190	245	12	0.95	11.4	2200	99	5.9	50	610
CD06018V24BHWQ				24	0.50	12					
CD06024V12BHWQ	240	250	305	12	0.50	6	1600	102	2.8	42	690
CD06024V24BHWQ				24	0.25	5.76					
CD06030V12BHWQ	300	310	365	12	0.60	7.2	1500	124	2.6	43	780
CD06030V24BHWQ				24	0.30	7.2					
CD06036V12BHWQ	360	370	425	12	0.65	7.8	1400	148	2.5	42	860
CD06036V24BHWQ				24	0.35	8.4					

_ for B / S = Ball Bearing / Sleeve Bearing

CD06012/CD06018

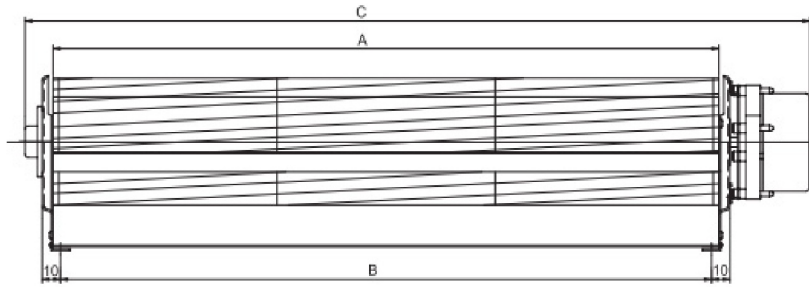


CD06024/CD06030/CD06036

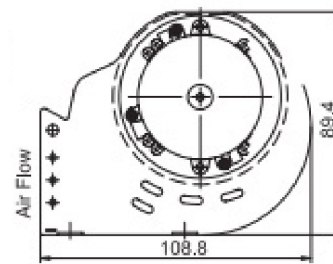




CD065Q- Series



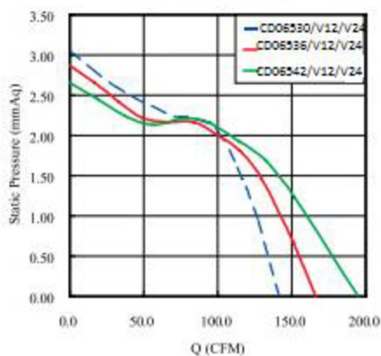
Size	Ø65mm
Housing	Aluminum
Impeller	Aluminum
Motor	DC Brushless type
Operating Temp.	0°C ~ +45°C
Insulation	Class A



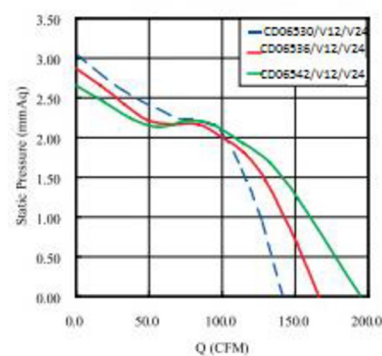
Model Number	Size (mm)			Voltage (V)	Current (A)	Power (W)	Speed (RPM)	Air Flow (CFM)	Pressure (mmH2O)	Noise dB(A)	Weight (g)
	A	B	C								
CD06512V12BHWQ	120	112	185	12	0.80	9.6	2200	81	8.2	48	560
CD06512V24BHWQ				24	0.45	10.8					
CD06518V12BHWQ	180	172	245	12	0.55	6.6	1500	95	3.8	38	650
CD06518V24BHWQ				24	0.25	6.0					
CD06524V12BHWQ	240	232	305	12	0.70	8.4	1400	124	3.5	40	740
CD06524V24BHWQ				24	0.30	7.2					
CD06530V12BHWQ	300	292	365	12	0.75	9.0	1300	145	3.1	40	830
CD06530V24BHWQ				24	0.35	8.4					
CD06536V12BHWQ	360	352	425	12	0.80	9.6	1200	166	2.9	40	920
CD06536V24BHWQ				24	0.40	9.6					
CD06542V12BHWQ	420	412	485	12	0.85	10.2	1100	191	2.7	41	1000
CD06542V24BHWQ				24	0.40	9.6					

_ for B / S = Ball Bearing / Sleeve Bearing

CD06512/18/24

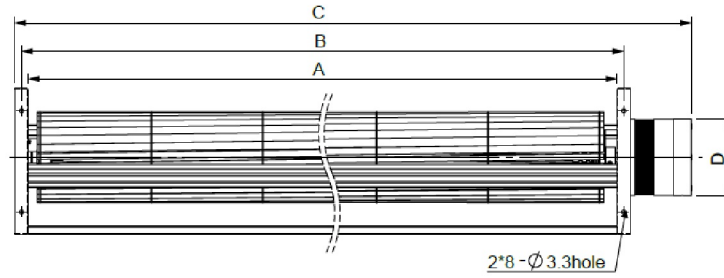


CD06530/36/42

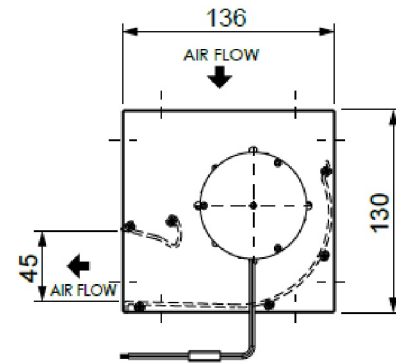




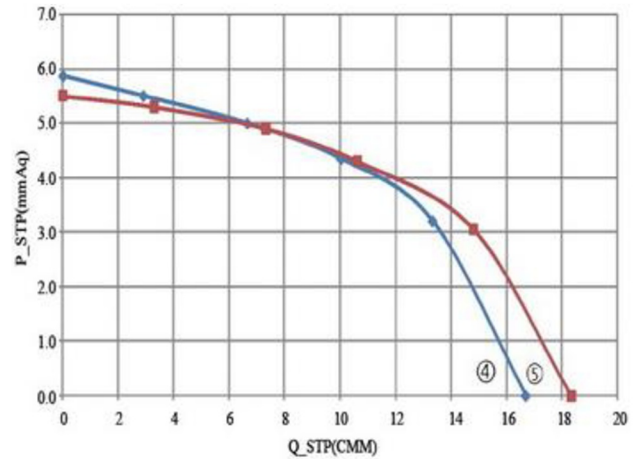
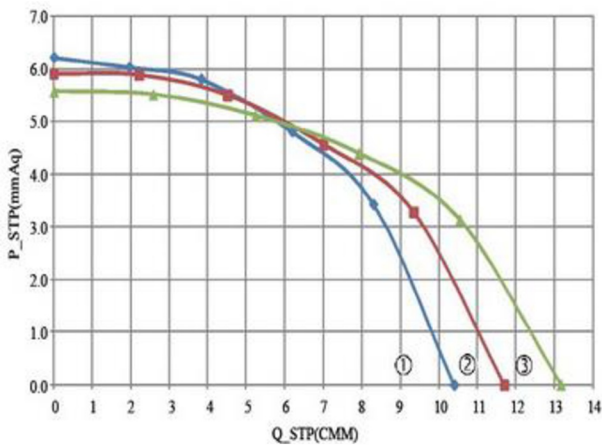
CD0813F- Series



Size	Ø81mm
Housing	Aluminum
Impeller	Aluminum
Motor	DC Brushless Motor (3-Phase-Motor)
Operating Temp.	0°C~+45°C
Insulation	Class A

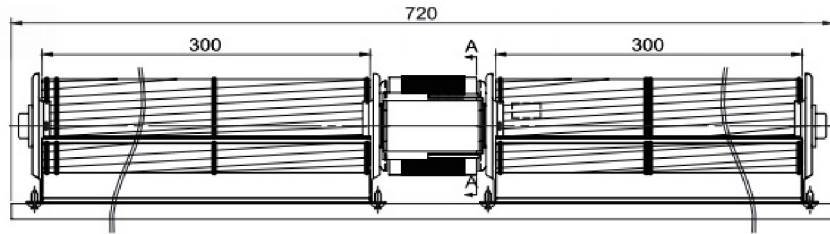


Model Number	Size (mm)			Voltage (V)	Current (A)	Power (W)	Speed (RPM)	Air Flow (CFM)	Pressure (mmH2O)	Noise (dB(A))	Weight (Kg)
	A	B	C								
CD08142V24B3HWF	440	445	527	24	1.85	44.4	1650	367 ○,1	6.2	53	1.90
CD08150V24B3HWF	520	535	607	24	1.95	46.8	1500	413 ○,2	5.8	52	2.05
CD08160V24B3HWF	620	635	707	24	2.10	50.4	1400	466 ○,3	5.5	51	2.25
CD08170V24B3HWF	720	735	805	24	2.30	55.2	1500	590 ○,4	5.8	52	2.90
CD08180V24B3HWF	720	835	905	24	2.35	56.4	1400	647 ○,3	5.5	51	3.05

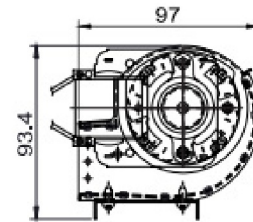




CD0813H- Series

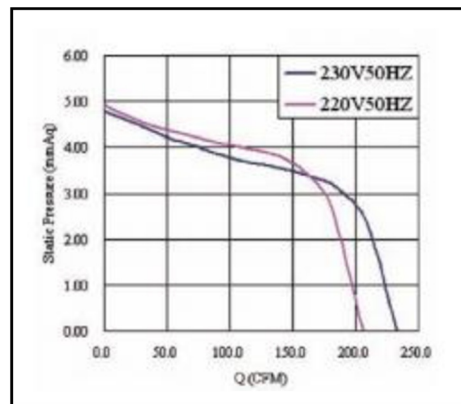


Size	Ø60mm
Housing	Aluminum
Impeller	Aluminum
Motor	AC Type
Operating Temp.	0°C~+45°C
Insulation	Class A



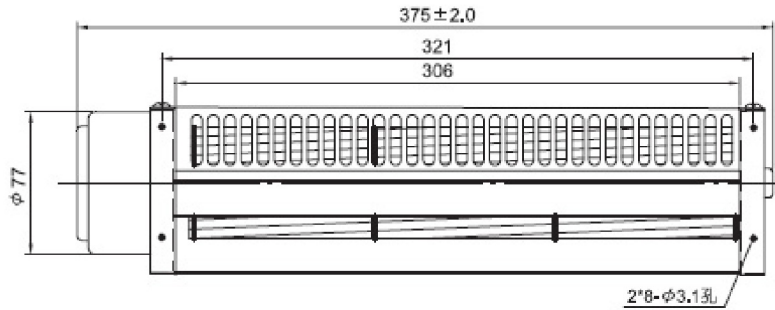
Model Number	Voltage	Frequency	Current	Power	Speed	Air Flow	Pressure	Noise	Weight
	(V)	(Hz)	(A)	(W)	(RPM)	(CFM)	(mmH2O)	dB(A)	(g)
CA603030V22BHWQ	220	50	0.43	50	1300	205	4.80	40	2800
	230	50	0.50	56	1400	234	5.80	43	

CA603030Q

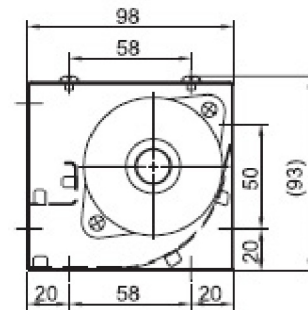




CD06030E- Series



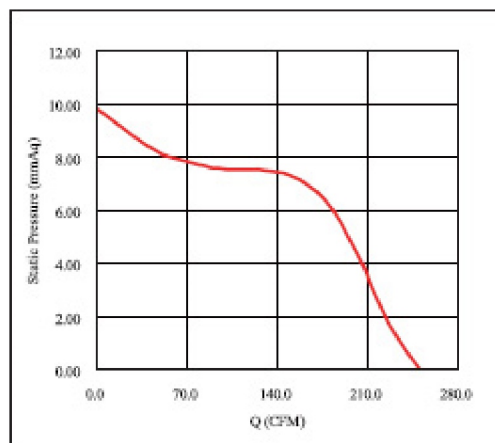
Size	Ø60mm
Housing	Aluminum
Impeller	Aluminum
Motor	DC Brushless 3 Phase Motor
Operating Temp.	0°C ~ +45°C
Insulation	Class A



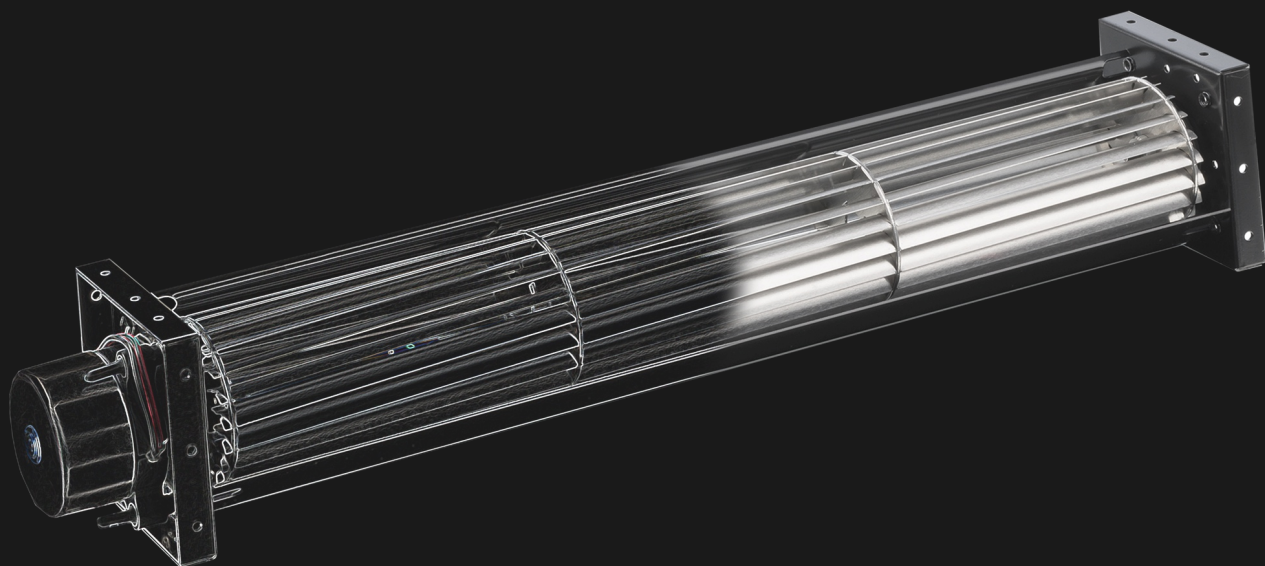
Model Number	Size (mm)			Voltage (V)	Current (A)	Power (W)	Speed (RPM)	Air Flow (CFM)	Pressure (mmH2O)	Noise (dB(A))	Weight (g)
	A	B	C								
CD06030V24_HWE	306	321	372	24	2.3	55.2	3500	265	9.80	62	1400
CD06030V24BHVHT				48	1.1	52.8	3500	265	9.80	62	1400

_ for B / S = Ball Bearing / Sleeve Bearing

Air Performance



Notizen



Errors and omissions excepted. Subjects to alterations
Irrtümer, Druckfehler und Änderungen vorbehalten

MOTRAXX
ELEKTROGERÄTE GMBH

STEINBACHER STRASSE 47-51
90559 BURGTHANN GERMANY
PHONE +49(0)9188-9405-60
FAX +49(0)9188-9405-66
EMAIL INFO@MOTRAXX.COM